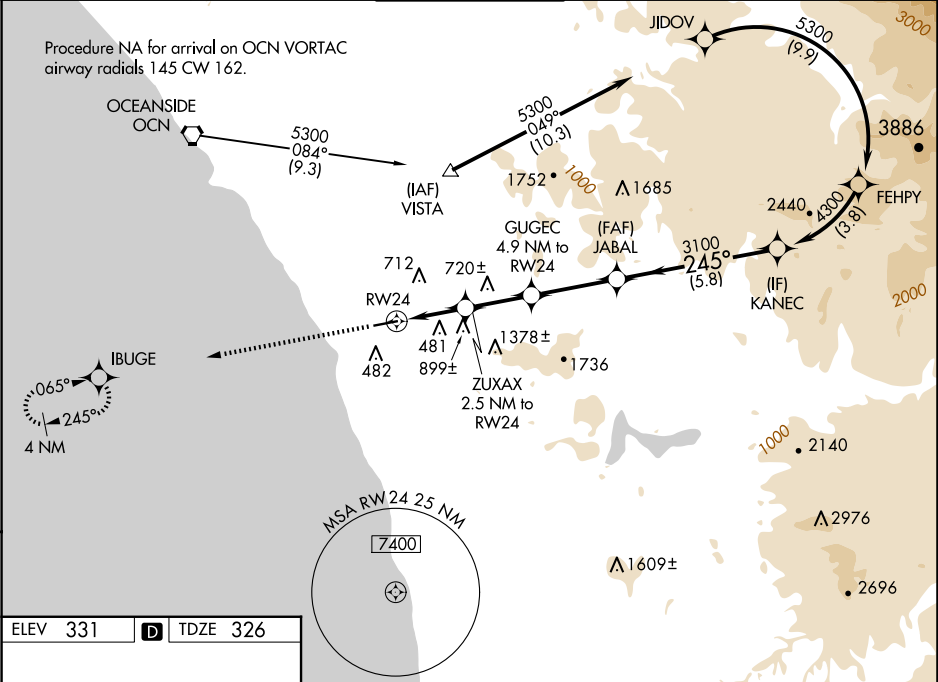


WAAS CH <b>45831</b> <b>W24B</b>	APP CRS <b>245°</b>	Rwy Ldg TDZE <b>326</b> Apt Elev <b>331</b>
--	------------------------	--

RNAV (GPS) X RWY 24

MC CLELLAN-PALOMAR (CRQ)

<div><div><div>⚠</div><div>⚠</div></div><div>For uncompensated Baro-VNAV systems, LNAV/VNAV NA below -4°C (25°F) or above 54°C (130°F). DME/DME RNP-0.3 NA. RF required. Rwy 24 helicopter visibility reduction below RVR 4000 NA. For inop ALS, increase LNAV/VNAV all Cats visibility to 1 1/2 SM. Increase LNAV Cats A/B visibility to RVR 5500, Cat C to 1 3/4 SM. Inop table does not apply to LPV.</div></div>	<div>MALSR<div><div>AS</div><div>⚡</div></div></div> <div>MISSED APPROACH: Climb to 2000 direct IBUGE and hold.</div>			
	ATIS 120.15	SOCAL APP CON 127.3 323.0	PALOMAR TOWER★ 118.6 (CTAF) 0 276.4	GND CON 121.8



ELEV 331	<b>D</b>	TDZE 326
----------	----------	----------

