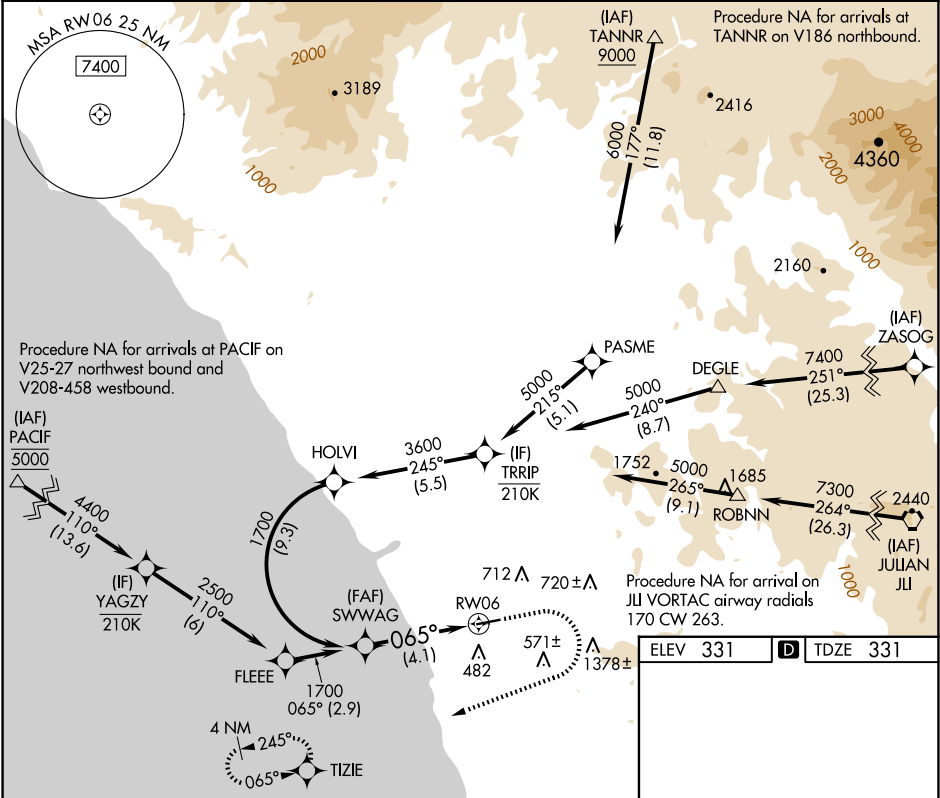


APP CRS	Rwy Ldg	4600
065°	TDZE	331
	Apt Elev	331

RNAV (RNP) Z RWY 6
MC CLELLAN-PALOMAR (CRQ)

RNP AR APCH - GPS. Authorization required. From HOLVI: RF	MISSED APPROACH: Climb to 750 then climbing right turn to 3000 direct TIZIE and hold, continue climb-in-hold to 3000. *Missed approach requires minimum climb of 280 feet per NM to 1800.
▼ For uncompensated Baro-VNAV systems, procedure NA below 5°C or above 54°C.	

ATIS 120.15	SOCAL APP CON 127.3 323.0	PALOMAR TOWER★ 118.6 (CTAF) 0 276.4	GND CON 121.8	CLNC DEL 134.85
----------------	------------------------------	--	------------------	--------------------



SWWAG	See planview for multiple IF locations. VGSI and RNAV glidepath not coincident (VGSI Angle 3.00/TCH 35).	750	3000	TIZIE
1700		↑	↗	✧
GP 3.00° TCH 55				
	065°			
	4.1 NM			
CATEGORY	A	B	C	D
RNP 0.30 DA*		637-7/8	306 (400-7/8)	
RNP 0.30 DA		750-1 1/8	419 (500-1 1/8)	
AUTHORIZATION REQUIRED				

