

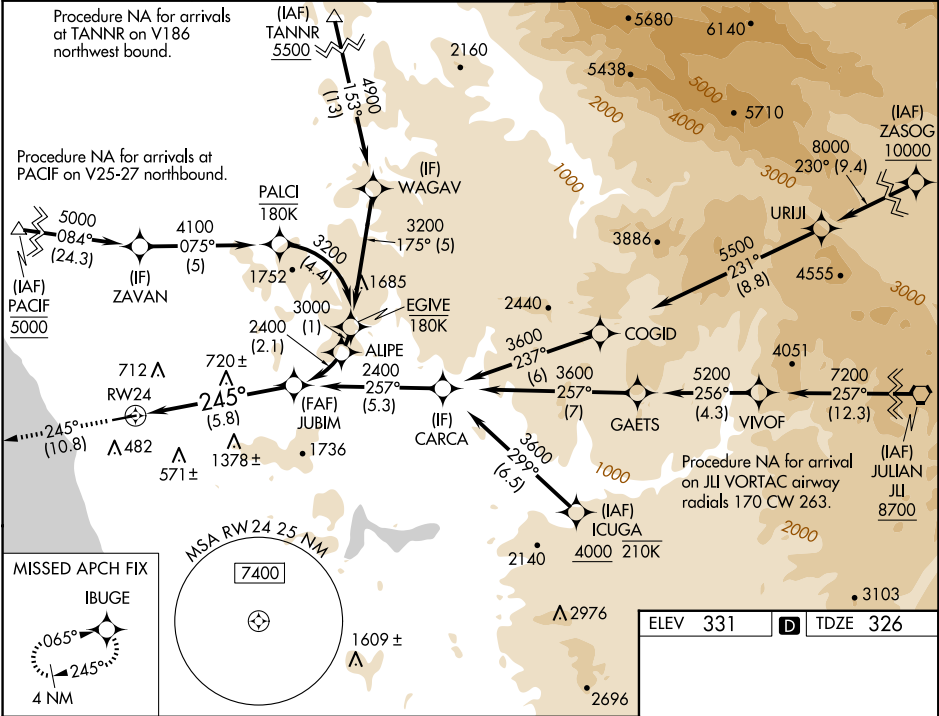
APP CRS	Rwy Ldg	4897
245°	TDZE	326
	Apt Elev	331


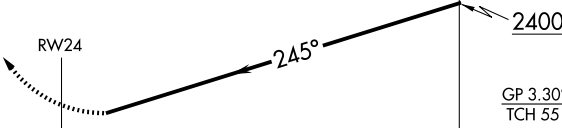
RNAV (RNP) Z RWY 24

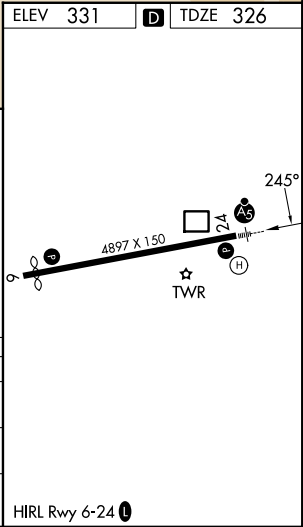
MC CLELLAN-PALOMAR (CRQ)

RNP AR APCH - GPS. Authorization required. From PALCI or EGIVE: RF, from CARCA, PALCI, URIJI, or WAGAV: min RNP 0.30. From JLI VORTAC: min RNP 0.60.	MALSR	MISSED APPROACH: Climb to 2000 on track 245° to IBUGE and hold.
For uncompensated Baro-VNAV systems, procedure NA below 5°C or above 54°C. For inop ALS increase RNP 0.10 visibility to RVR 6000 and RNP 0.30 visibility to 1 3⁄4 SM all Cats.		

ATIS 120.15	SOCAL APP CON 127.3 323.0	PALOMAR TOWER* 118.6 (CTAF) 276.4	GND CON 121.8	CLNC DEL 134.85
----------------	------------------------------	--------------------------------------	------------------	--------------------



2000 ↑ tr 245°	IBUGE 	VGSI and RNAV glidepath not coincident (VGSI Angle 3.20/TCH 54). See planview for multiple IF locations.			JUBIM 2400
					
GP 3.30° TCH 55					
CATEGORY	A	B	C	D	
RNP 0.10 DA	745/40		419 (500-¾)		
RNP 0.30 DA	931-1 ⅜		605 (600-1 ⅜)		
AUTHORIZATION REQUIRED					



SW-3, 07 AUG 2025 to 04 SEP 2025

SW-3, 07 AUG 2025 to 04 SEP 2025