

VOR/DME SPW <b><u>115.15</u></b> Chan <b>98</b> (Y)	APP CRS <b>292°</b>	Rwy Idg <b>5511</b> TDZE <b>1338</b> Apt Elev <b>1339</b>
---	------------------------	---

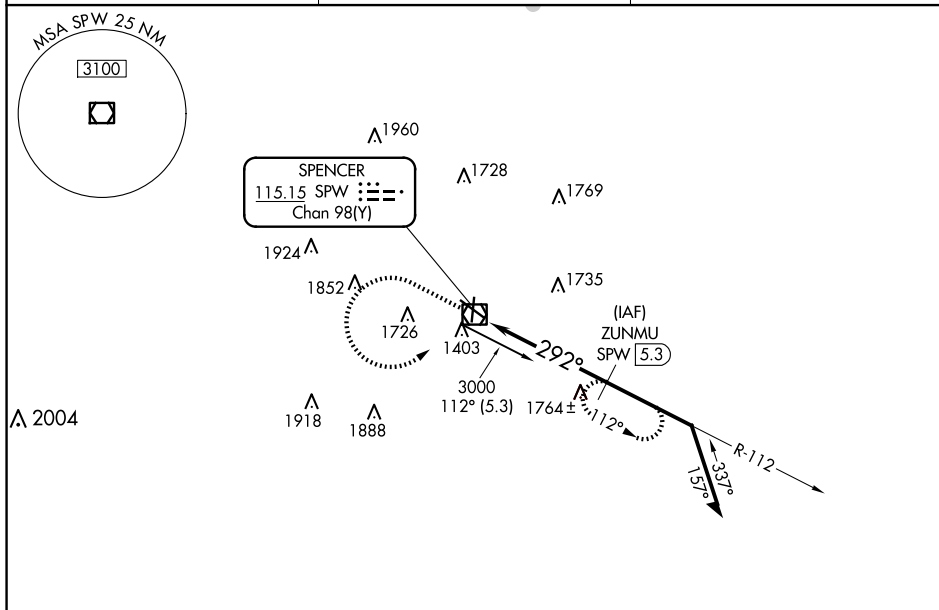
VOR RWY 30  
SPENCER MUNI (SPW)

DME required.

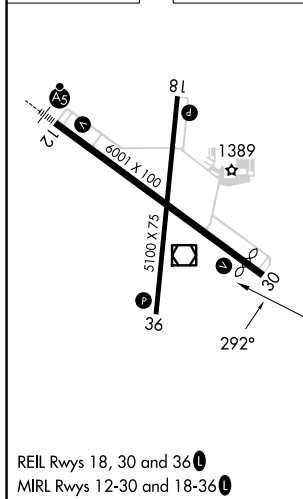
**T** VDP NA when using Estherville altimeter setting.  
**A** When local altimeter setting not received, use Estherville altimeter setting and increase all MDA 60 feet and increase S-30 Cat C/D visibility  $\frac{1}{2}$  SM and Circling Cat C/D visibility  $\frac{1}{4}$  SM.

**MISSED APPROACH:** Climb to 3000, then left turn direct SPW VOR/DME, then on SPW VOR/DME R-112 to ZUNMU/SPW 5.3 DME and hold.

ASOS <b>126.625</b>	MINNEAPOLIS CENTER <b>127.75 257.7</b>	UNICOM <b>123.0 (CTAF) 0</b>
------------------------	---	---------------------------------



ELEV 1339		TDZE 1338
-----------	--	-----------

[illegible]