

WAAS CH 87133 W30A	APP CRS 301°	Rwy Idg TDZE 1338 Apt Elev 1339
--	------------------------	---

RNAV (GPS) RWY 30

SPENCER MUNI (SPW)

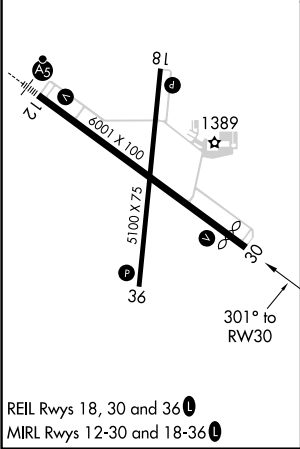
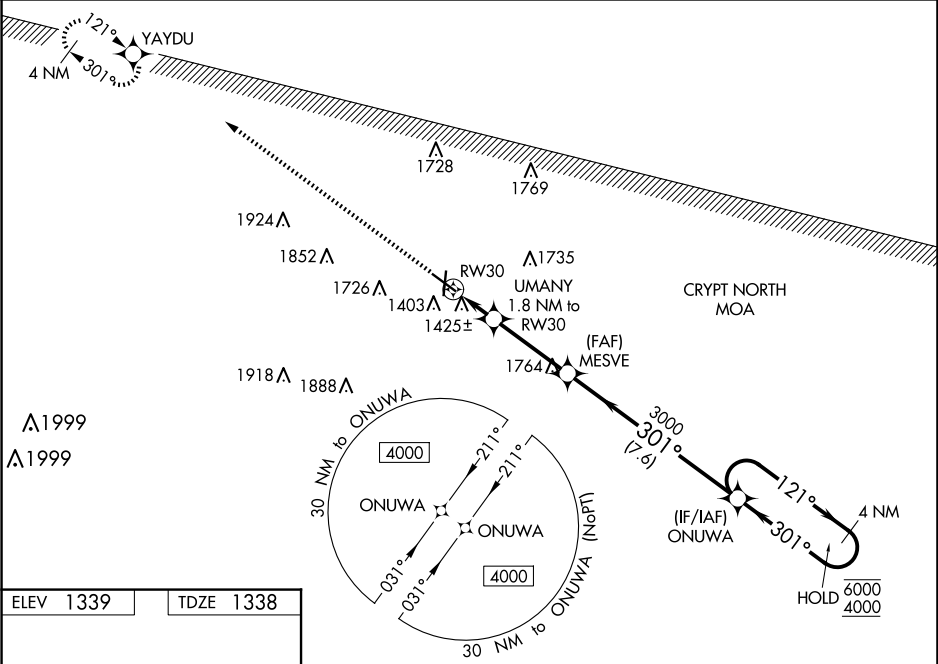
RNP APCH-GPS.

▼

Baro-VNAV and VDP NA when using Estherville altimeter setting. For uncompensated Baro-VNAV systems, LNAV/VNAV NA below -20°C or above 54°C. When local altimeter setting not received, use Estherville altimeter setting: increase LPV DA to 1648 feet, LNAV/VNAV DA to 1683 feet and all visibilities ½ SM; increase all MDAs 60 feet and visibility Cats C and D ¼ SM.

MISSED APPROACH:
Climb to 4000 direct YAYDU and hold.

ASOS 126.625	MINNEAPOLIS CENTER 127.75 257.7	UNICOM 123.0 (CTAF) 0
------------------------	---	---------------------------------



4000	YAYDU	VGSI and RNAV glidepath not coincident (VGSI Angle 3.00°/TCH 26).			
4000	YAYDU	UMANY 1.8 NM to RW30	MESVE	ONUWA	4 NM Holding Pattern
1.1 NM to RW30	1.1 NM to RW30	3.3 NM	7.6 NM	121°→ 6000	← 301° 4000
1940	3000	3000	GP 3.00°	TCH 50	
1.1	0.7	3.3	7.6		
CATEGORY	A	B	C	D	
LPV DA	1588-¾		250 (300-¾)		
LNAV/VNAV DA	1623-⅞		285 (300-⅞)		
LNAV MDA	1720-1	382 (400-1)	1720-1½	382 (400-1½)	
CIRCLING	1760-1 421 (500-1)	1800-1 461 (500-1)	2100-2¼ 761 (800-2¼)	2100-2½ 761 (800-2½)	