

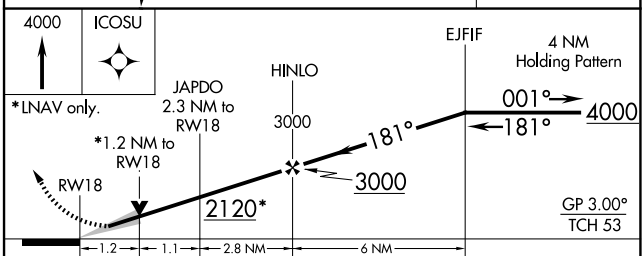
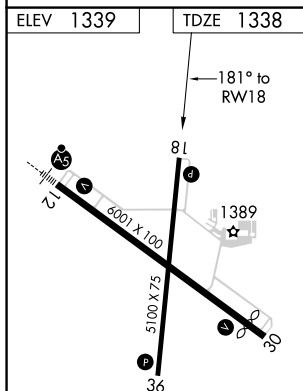
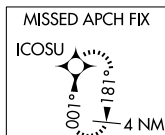
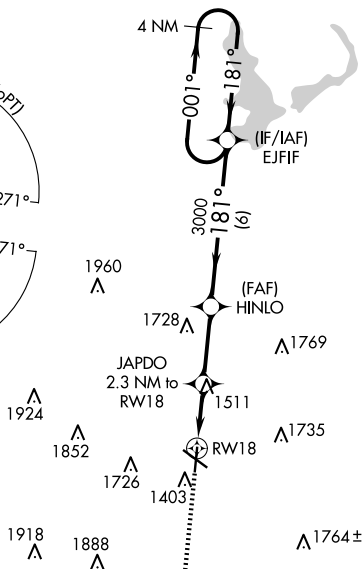
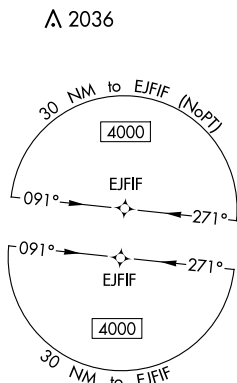
WAAS CH 61333 W18A	APP CRS 181°	Rwy Idg 5100 TDZE 1338 Apt Elev 1339
--	------------------------	---


RNAV (GPS) RWY 18
SPENCER MUNI (SPW)

V Baro-VNAV and VDP NA when using Estherville altimeter setting. For uncompensated
A Baro-VNAV systems, LNAV/VNAV NA below -20°C (-4°F) or above 54°C (130°F).
DME/DME RNP-0.3 NA. When local altimeter setting not received, use Estherville
altimeter setting and increase all DA/MDA 60 feet; increase LNAV/VNAV all Cats
visibility to 1½ mile.

MISSED APPROACH:
Climb to 4000 direct
ICOSU and hold.

ASOS 126.625	MINNEAPOLIS CENTER 127.75 257.7	UNICOM 123.0 (CTAF) 0
------------------------	---	---------------------------------



CATEGORY		A	B	C	D
LPV	DA	1588-1	250 (300-1)	NA	
LNAV/ VNAV	DA	1608-1	270 (300-1)	NA	
LNAV	MDA	1780-1	442 (500-1)	NA	
 CIRCLING		1780-1 441 (500-1)	1820-1 481 (500-1)	NA	

SPENCER, IOWA
Amdt 1A 05FEB15

43°10'N-95°12'W

SPENCER MUNI (SPW)
RNAV (GPS) RWY 18

NC-3, 07 AUG 2025 to 04 SEP 2025

NC-3, 07 AUG 2025 to 04 SEP 2025