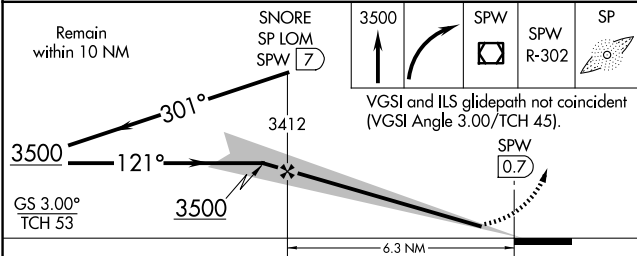
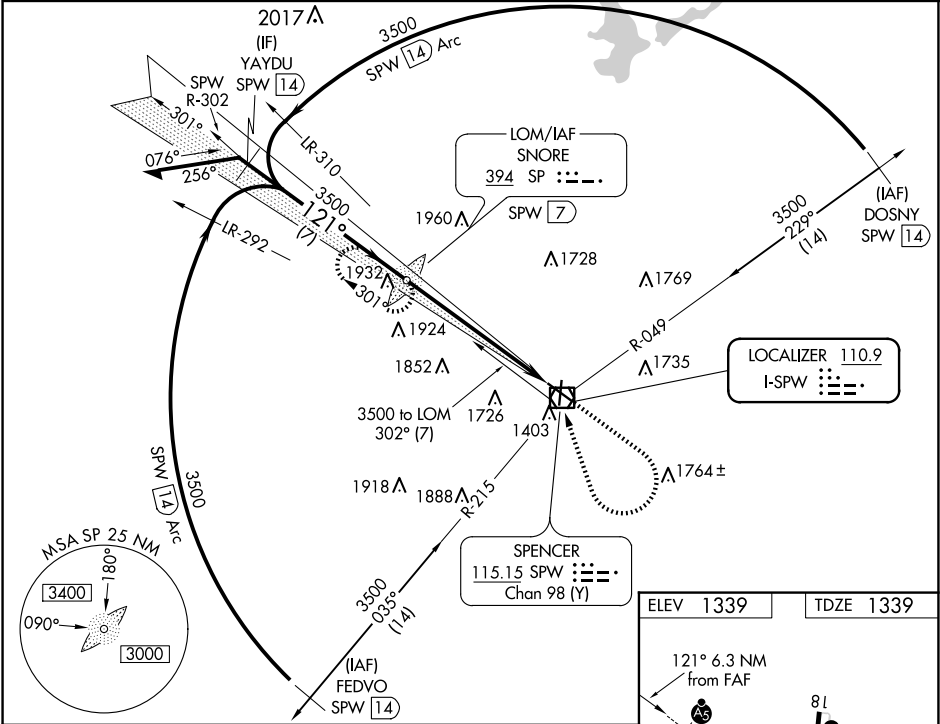


LOC I-SPW 110.9	APP CRS 121°	Rwy Idg TDZE Apt Elev 6001 1339 1339
---------------------------	------------------------	--

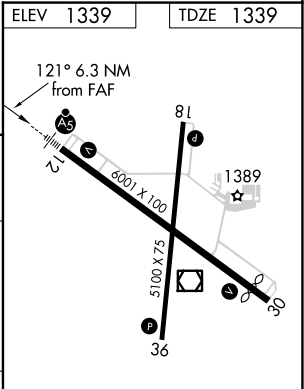
ILS or LOC RWY 12
SPENCER MUNI (SPW)

ADF or DME required.	MALSR	MISSED APPROACH: Climb to 3500 then right turn direct SPW VOR/DME then on SPW VOR/DME R-302 to SNORE LOM/SPW VOR/DME 7 DME and hold.
NA For inop ALS, increase S-LOC 12 Cats C and D visibility to 1 1/4 SM. When local altimeter setting not received, use Estherville altimeter setting and increase S-ILS 12 DA to 1599 feet; increase all MDAs 60 feet and S-LOC 12 visibility Cat C/D 1/4 SM, and Circling visibility Cat C/D 1/4 SM. For inop ALS, when using Estherville altimeter setting, increase S-LOC 12 Cats C and D visibility to 1 1/4 SM.		

ASOS 126.625	MINNEAPOLIS CENTER 127.75 257.7	UNICOM 123.0 (CTAF)
------------------------	---	-------------------------------



CATEGORY	A	B	C	D
S-ILS 12		1539-1/2	200 (200-1/2)	
S-LOC 12	1900-1/2	561 (600-1/2)	1900-1 1/4	561 (600-1 1/4)
CIRCLING	1900-1	561 (600-1)	2100-2 1/4	2100-2 1/2



REIL Rwy 18, 30 and 36	
MRL Rwy 12-30 and 18-36	
FAF to MAP	6.3 NM
Knots	60 90 120 150 180
Min:Sec	6:18 4:12 3:09 2:31 2:06

NC-3, 07 AUG 2025 to 04 SEP 2025

NC-3, 07 AUG 2025 to 04 SEP 2025