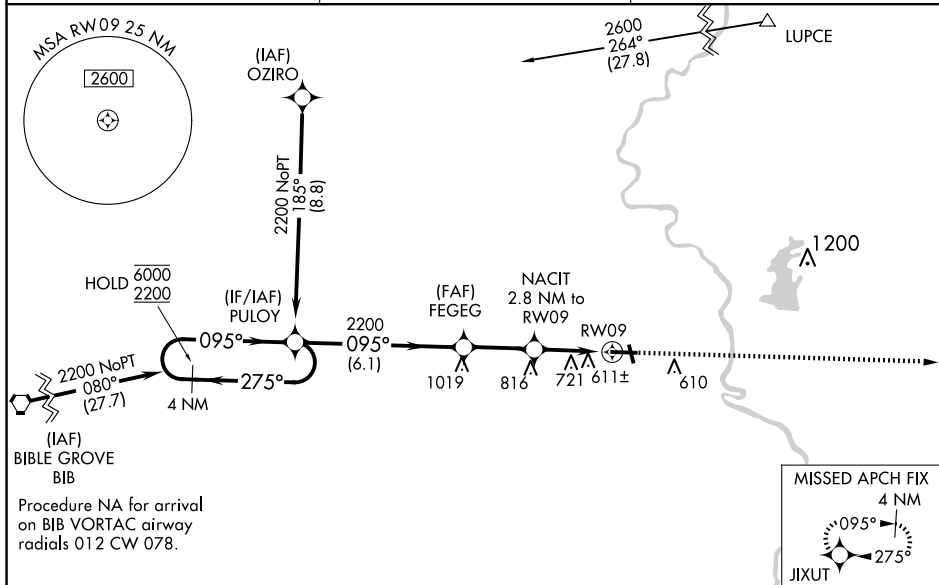


# RNAV (GPS) RWY 9

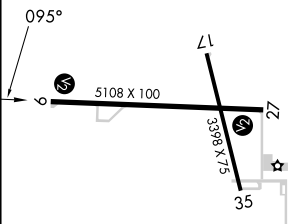
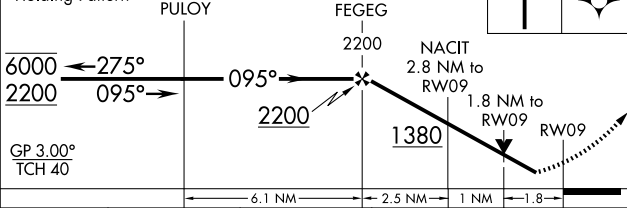
## CRAWFORD COUNTY (RSV)


**MISSED APPROACH:**  
Climb to 2200 direct  
JIXUT and hold.

UNICOM  
123.0 (CTAF) **L**



4 NM  
Holding Pattern



CATEGORY		A	B	C	D
LPV	DA	805-1 $\frac{1}{8}$ 344 (400-1 $\frac{1}{8}$ )			
RNAV/ RNAV	DA	1103-2 $\frac{1}{2}$ 642 (700-2 $\frac{1}{2}$ )			
RNAV	MDA	1040-1 579 (600-1)		1040-1 $\frac{5}{8}$ 579 (600-1 $\frac{5}{8}$ )	
 CIRCLING		1040-1 579 (600-1)	1080-1 619 (700-1)	1120-1 $\frac{3}{4}$ 659 (700-1 $\frac{3}{4}$ )	1180-2 $\frac{1}{4}$ 719 (800-2 $\frac{1}{4}$ )

REIL Rwy 17, 9 and 27 **L**  
MIRL Rwy 9-27 and 17-35 **L**