

WAAS
CH **63033**
W17A

APP CRS
169°

Rwy Idg
TDZE **455**
Apt Elev **461**

RNAV (GPS) RWY 17

CRAWFORD COUNTY (RSV)

RNP APCH - GPS.

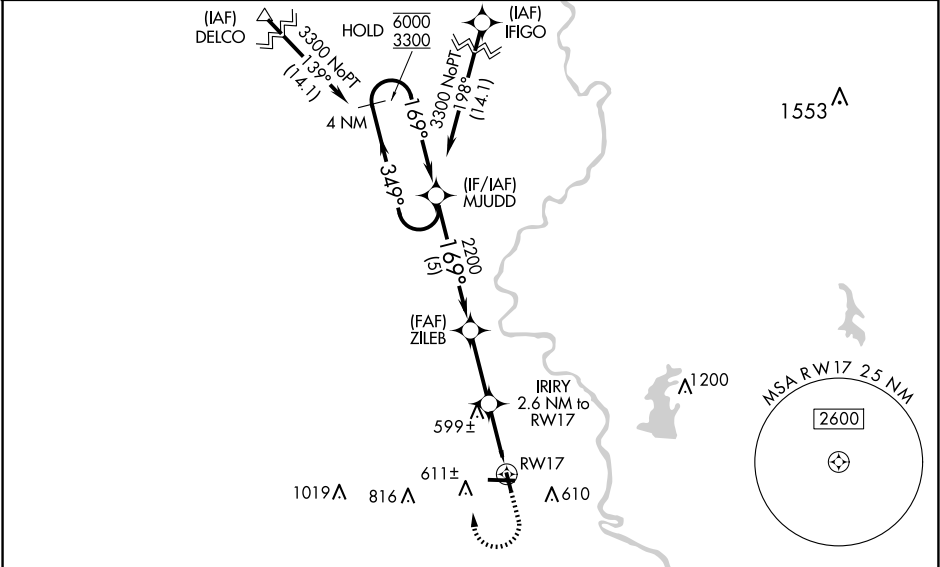
▼

▲

Rwy 17 helicopter visibility reduction below $\frac{3}{4}$ SM NA.
For uncompensated Baro-VNAV systems,
LNAV/VNAV NA below -15°C or above 54°C.

MISSED APPROACH: Climb to 1300 then climbing right turn to 3300 direct MUDD and hold.

AWOS-3 120.50	HULMAN APP CON 135.35 339.8	UNICOM 123.0 (CTAF) 0
-------------------------	---------------------------------------	--



4 NM Holding Pattern

MUDD

6000 ← 349°
3300 ← 169°

GP 3.00°
TCH 51

5 NM

2.7 NM

1.5

1.1 NM

1300

3300

MUDD

169°

2200

1320

1.1 NM to RW17

2.6 NM to RW17

1.1 NM to RW17

5108 X 100

3398 X 75

35

CATEGORY	A	B	C	D
LPV DA	734-1	279 (300-1)		NA
LNAV/VNAV DA	812-1½	357 (400-1½)		NA
LNAV MDA	860-1	405 (400-1)	860-1½ 405 (400-1½)	NA
CIRCLING	940-1 479 (500-1)	1080-1 619 (700-1)	1120-1¾ 659 (700-1¾)	NA

ELEV 461

TDZE 455

REIL Rwy 17, 9 and 27 **0**
MIRL Rwy 9-27 and 17-35 **0**