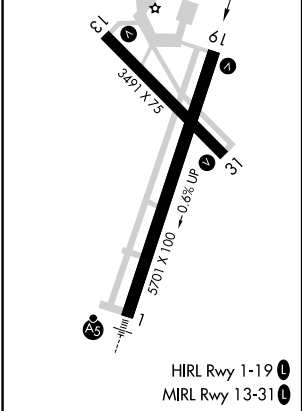
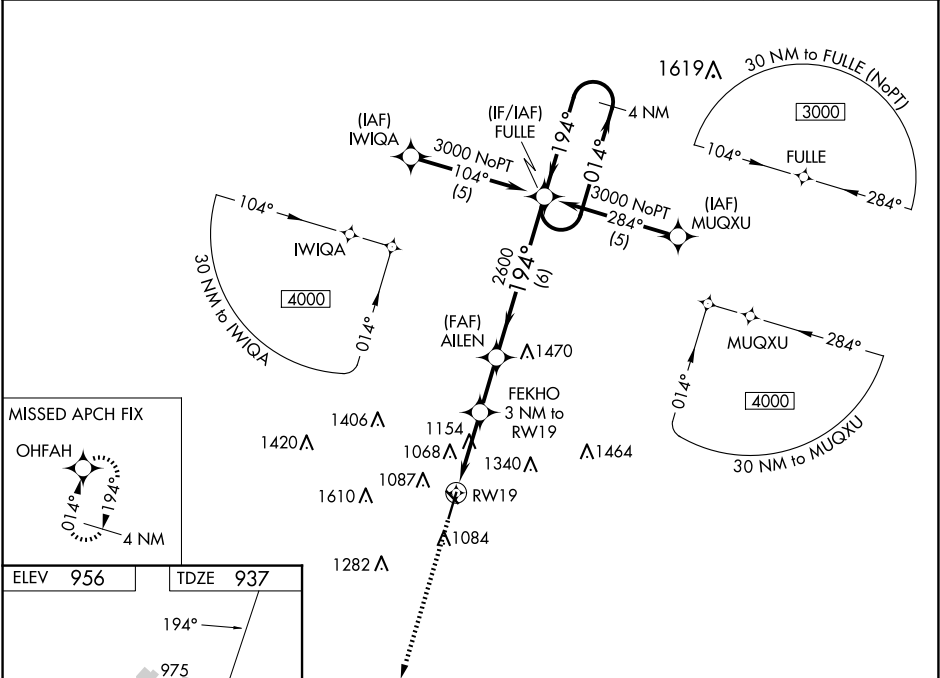






WAAS CH 61217 W19A	APP CRS 194°	Rwy Ldg TDZE Apt Elev	5701 937 956
--	------------------------	-----------------------------	---

RNAV (GPS) RWY 19
AMES MUNI (AMW)

RNP APCH - GPS.	MISSED APPROACH: Climb to 4000 direct OHFAH and hold.
Baro-VNAV and VDP NA when using Ankeny altimeter setting. For uncompensated Baro-VNAV systems, LNAV/VNAV NA below -16°C or above 54°C. Rwy 19 helicopter visibility reduction below ¾ SM NA. When local altimeter setting not received, use Ankeny altimeter setting and increase LPV DA to 1239 feet and all visibilities ½ SM. Increase LNAV/VNAV DA to 1434 feet; increase all MDAs 60 feet and LNAV visibility Cat C ¼ SM.	

ASOS 132.025	DES MOINES APP CON 123.9 307.15	CLNC DEL 126.0	UNICOM 122.7 (CTAF) 0
------------------------	---	--------------------------	---------------------------------



4000	OHFAH	VGSI and RNAV glidepath not coincident (VGSI Angle 4.00/TCH 41).			FULLE	4 NM Holding Pattern
					AILEN	
*LNAV only.		FEKHO 3 NM to RW19	2600			
		1.1 NM to RW19	1920	194°	2600	014°→ ←194° 3000
						GP 3.00° TCH 48
		1.1 NM	1.9 NM	2.1 NM	6 NM	
CATEGORY		A	B	C	D	
LPV DA		1187-1 250 (300-1)			NA	
LNAV/ VNAV DA		1382-1 3/8 445 (500-1 3/8)			NA	
LNAV MDA		1420-1 483 (500-1)		1420-1 3/8 483 (500-1 3/8)		NA