

LOC/DME I-EEE  
**110.7**  
Chan **44**

APP CRS  
**014°**

Rwy Ldg  
TDZE **956**  
Apt Elev **956**

ILS or LOC RWY 1

AMES MUNI (AMW)

DME required.

NA

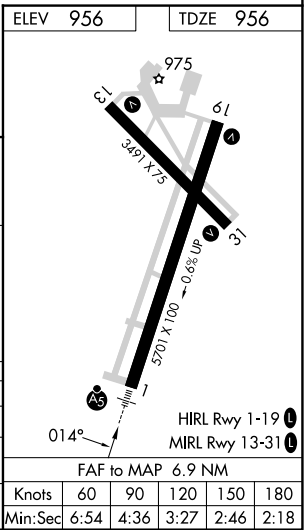
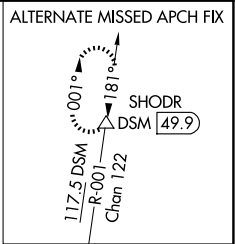
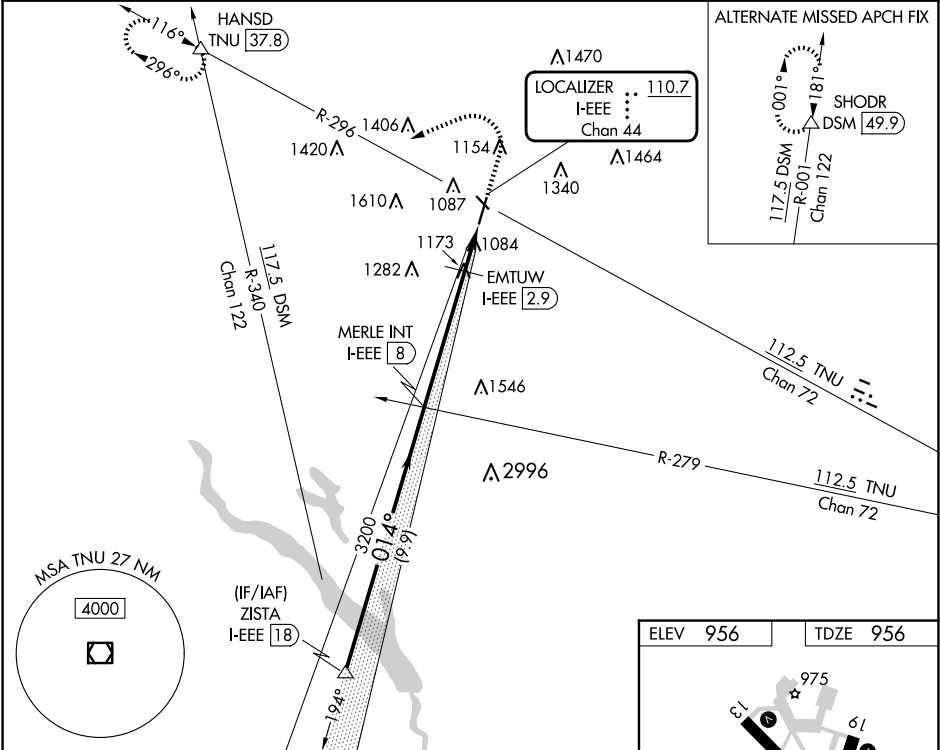
-26°C

For inop ALS increase S-LOC 1 Cat C/D visibility to 1½ SM.

MALSR

MISSED APPROACH: Climb to 1700 then climbing left turn to 4000 on heading 240° and TNU VOR/DME R-296 to HANSD INT/37.8 DME and hold, continue climb-in-hold to 4000.

ASOS <b>132.025</b>	DES MOINES APP CON <b>123.9 307.15</b>	CLNC DEL <b>126.0</b>	UNICOM <b>122.7 (CTAF) 0</b>
------------------------	---	--------------------------	---------------------------------



	ZISTA I-EEE [18]	MERLE INT I-EEE [8]	EMTUW I-EEE [2.9]	HANSD I-EEE [1.1]
	4000	3200	1580	
	GS 3.00° TCH 50			
	9.9 NM	5.1 NM	1.8 NM	
CATEGORY	A	B	C	D
S-ILS 1	1206-½ 250 (300-½)			
S-LOC 1	1440-½	484 (500-½)	1440-1	484 (500-1)
CIRCLING	1440-1 484 (500-1)	1460-1 504 (600-1)	1640-2 684 (700-2)	1960-3 1004 (1100-3)