

KAMUELA, HAWAII

AL-5306 (FAA)

24361

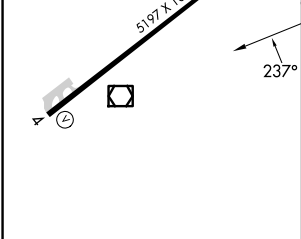
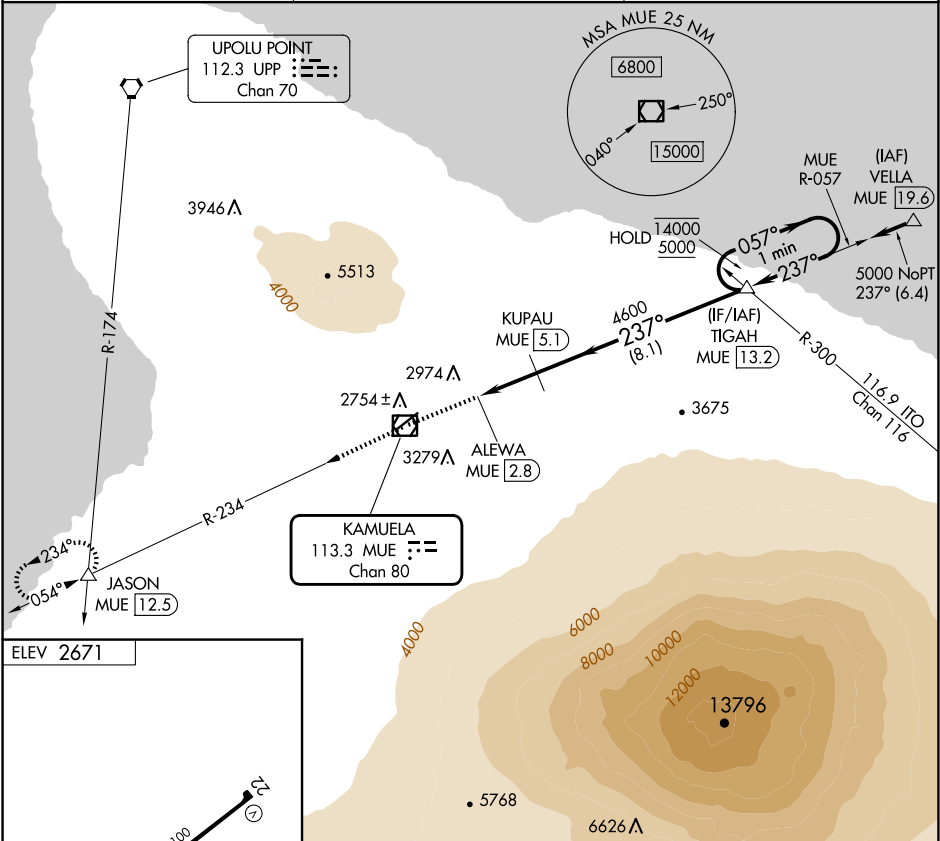
VOR/DME MUE <b>113.3</b> Chan <b>80</b>	APP CRS <b>237°</b>	Rwy Idg TDZE Apt Elev <b>N/A</b> <b>N/A</b> <b>2671</b>
---	------------------------	--

VOR-A

WAIMEA-KOHALA (MUE)(PHMU)

DME required.	MISSED APPROACH: Climb to 5000 on MUE VOR/DME R-234 to JASON INT/12.5 DME and hold.
▼ ▲ NA When local altimeter setting not received, procedure NA. Circling NA northwest of Rwy 4-22.	

AWOS-3PT <b>120.0</b>	HCF CENTER <b>118.45 278.3</b>	CTAF <b>122.90</b>
--------------------------	-----------------------------------	-----------------------



MIRL Rwy 4-22 REIL Rwy 4 and 22				
	5000	JASON	TIGAH	
	MUE R-234		MUE 13.2	
	MUE VOR/DME	KUPAU		One Minute Holding Pattern
		MUE 5.1		
		ALEWA		
		MUE 2.8		
		4600		
		2.3 NM	8.1 NM	
CATEGORY	A	B	C	D
CIRCLING	3680-2¾	1009 (1100-2¾)	3680-3	3980-3
			1009 (1100-3)	1309 (1400-3)

KAMUELA, HAWAII  
Amdt 1 26DEC24

20°00'N-155°40'W

WAIMEA-KOHALA (MUE)(PHMU)

VOR-A

PAC, 07 AUG 2025 to 02 OCT 2025

PAC, 07 AUG 2025 to 02 OCT 2025