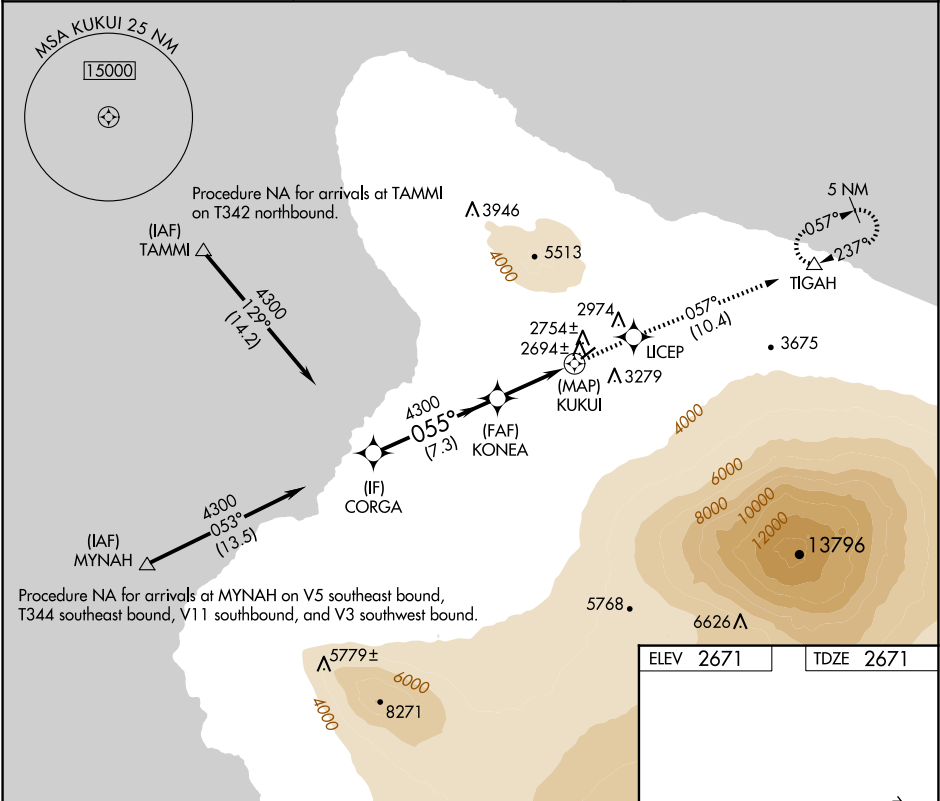


APP CRS	Rwy Idg	5197
055°	TDZE	2671
	Apt Elev	2671

RNAV (GPS) RWY 4
WAIMEA-KOHALA (MUE)(PHMU)

RNP APCH - GPS.	MISSED APPROACH: Climb to 5000 direct UCEP and on track 057° to TIGAH and hold.
⚠ NA Circling NA northwest of Rwy 4-22. ⚠ NA When local altimeter setting not received, procedure NA.	

AWOS-3PT 120.0	HCF CENTER 118.45 278.3	CTAF 122.9 0
-------------------	----------------------------	-----------------



VGSi and descent angles not coincident (VGSi Angle 2.50/TCH 43).				5000	UCEP	tr 057°	TIGAH
CORGA				⬆	✳		△
KONEA							
4300 — 055° — 4300							
1.5 NM to KUKUI							
KUKUI							
3.00° TCH 45							
7.3 NM				3 NM	1.5	0.5	
CATEGORY	A	B	C	D			
RNAV MDA	3220-1	549 (600-1)	3220-1½	549 (600-1½)			
CIRCLING	3520-1¼	849 (900-1¼)	3620-2¾ 949 (1000-2¾)	3980-3 1309 (1400-3)	MIRL Rwy 4-22 0 REIL Rwys 4 and 22		