


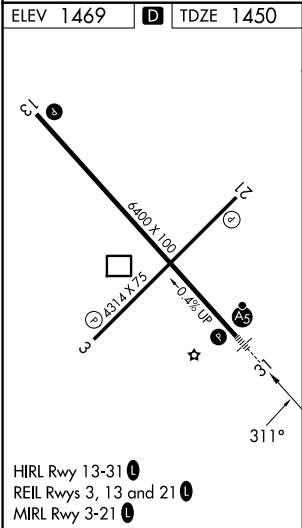
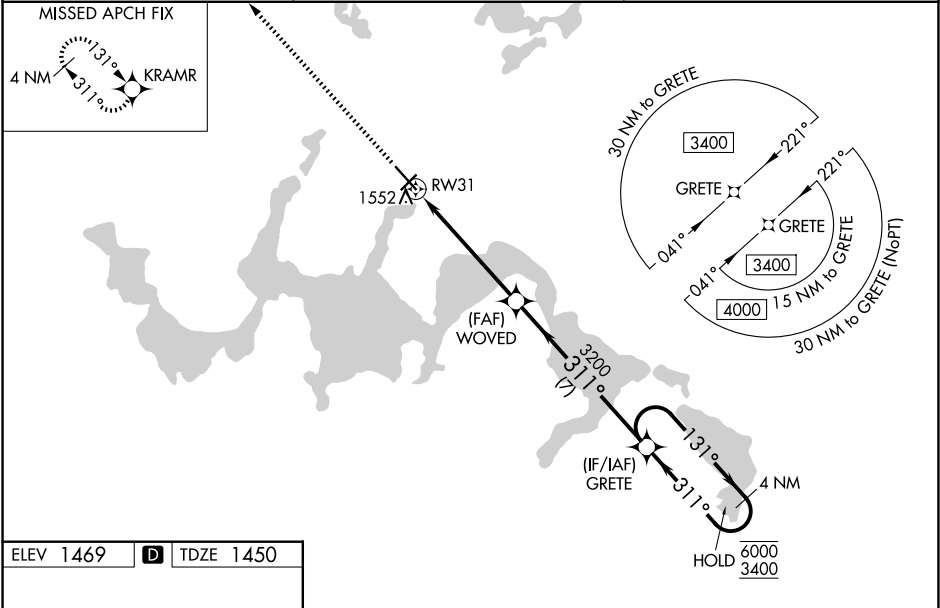
WAAS CH <b>58314</b> <b>W31A</b>	APP CRS <b>311°</b>	Rwy Ldg TDZE <b>1450</b> Apt Elev <b>1469</b>
--	------------------------	---

RNAV (GPS) RWY 31

DEVILS LAKE RGNL (DVL)

RNP APCH - GPS. ⚠ For uncompensated Baro-VNAV systems, LNAV/VNAV NA below -17°C or above 54°C. Baro-VNAV and VDP NA when using Cando altimeter setting. For inop ALS, increase LNAV/VNAV all Cats visibility to ¾ SM, LNAV Cats C/D visibility to 1 SM. When local altimeter setting not received, use Cando altimeter setting and increase LPV DA 1711 feet, LNAV/VNAV DA to 1782 feet; increase all MDAs 80 feet and LNAV visibility Cat C/D ¼ SM, and Circling visibility Cat C/D ¼ SM. For inop ALS when using Cando altimeter setting, increase LPV all Cats visibility to ¾ SM.	MALSR 	MISSED APPROACH: Climb to 3400 direct KRAMR and hold.
--	--	---

AWOS-3PT <b>125.875</b>	MINNEAPOLIS CENTER <b>124.2 270.3</b>	UNICOM <b>122.8 (CTAF) 0</b>
----------------------------	--	---------------------------------



3400 KRAMR	↑	WOVED	GRETE	4 NM Holding Pattern
1 NM to RW31	3200	311°	6000	3400
1 NM	4.3 NM	7 NM		
CATEGORY	A	B	C	D
LPV DA	1650-½		200 (200-½)	
LNAV/VNAV DA	1721-½		271 (300-½)	
LNAV MDA	1820-½	370 (400-½)	1820-⅝	370 (400-⅝)
CIRCLING	2000-1	531 (600-1)	2240-2¼ 771 (800-2¼)	2240-2½ 771 (800-2½)

NC-1, 07 AUG 2025 to 04 SEP 2025

NC-1, 07 AUG 2025 to 04 SEP 2025