

WAAS CH 93608 W03A	APP CRS 038°	Rwy Ldg 4314 TDZE 1450 Apt Elev 1470
--	------------------------	---

RNAV (GPS) RWY 3

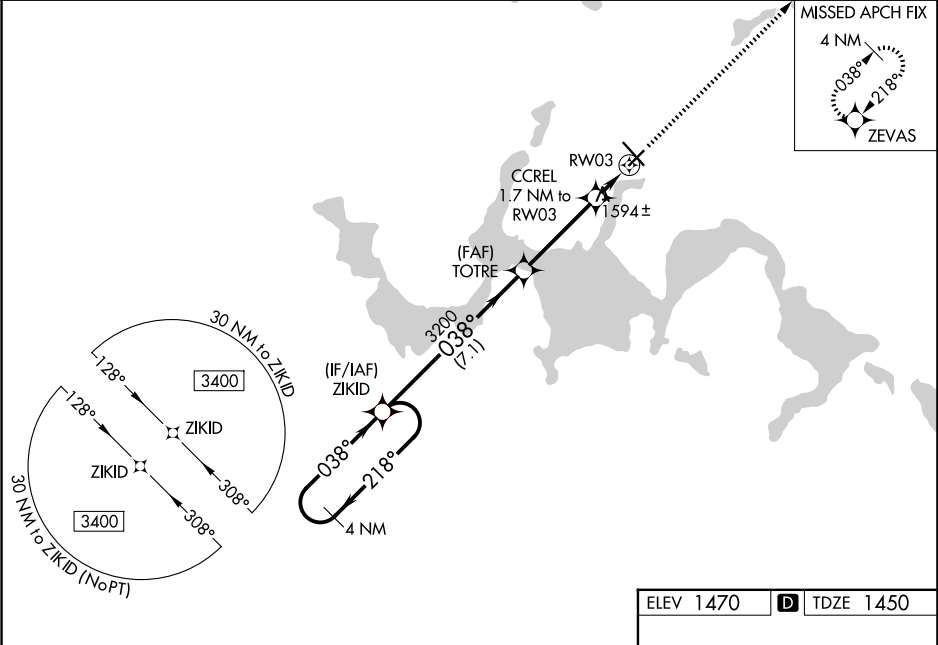
DEVILS LAKE RGNL (DVL)

⚠

For uncompensated Baro-VNAV systems, LNAV/VNAV NA below -17°C (2°F) or above 54°C (130°F). DME/DME RNP-0.3 NA. When local altimeter setting not received, use Cando altimeter setting and increase all DA 63 feet, and all MDA 80 feet, increase LNAV/VNAV all Cats visibility 1⁄8 mile, LNAV and Circling Cat C and D visibility 1⁄4 mile. Helicopter visibility reduction below 3⁄4 SM NA. Baro-VNAV NA when using Cando altimeter setting.

MISSED APPROACH: Climb to 3400 direct ZEVAS and hold.

AWOS-3PT 125.875	MINNEAPOLIS CENTER 124.2 270.3	UNICOM 122.8 (CTAF) 0
----------------------------	--	---------------------------------



4 NM Holding Pattern		VGSI and RNAV glidepath not coincident (VGSI Angle 3.00/TCH 25).		3400	ZEVAS
3400 ← 218°		038° →		038°	*LNAV only.
GP 3.00°		TCH 50		3200	RW03
7.1 NM		3.6 NM		1.7 NM	
CATEGORY	A	B	C	D	
LPV DA	1700-1		250 (300-1)		
LNAV/VNAV DA	1714-1		264 (300-1)		
LNAV MDA	1860-1 410 (400-1)		1860-1 1⁄8 410 (400-1 1⁄8)		
CIRCLING	2000-1 530 (600-1)		2240-2 1⁄4 770 (800-2 1⁄4)		

