

WAAS CH <b>78314</b> <b>W13A</b>	APP CRS <b>131°</b>	Rwy Ldg <b>6400</b> TDZE <b>1470</b> Apt Elev <b>1470</b>
--	------------------------	---

RNAV (GPS) RWY 13

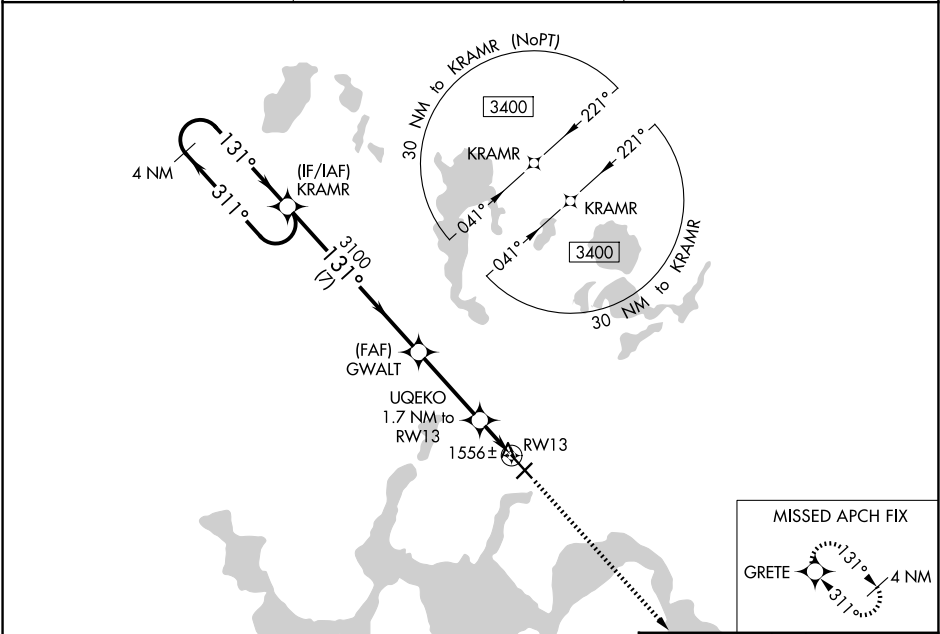
DEVILS LAKE RGNL (DVL)

⚠

For uncompensated Baro-VNAV systems, LNAV/VNAV NA below -17°C (2°F) or above 54°C (130°F). DME/DME RNP-0.3 NA. Baro-VNAV and VDP NA when using Cando altimeter setting. When local altimeter setting not received, use Cando altimeter setting and increase all DA 63 feet and all MDA 80 feet, increase LPV and LNAV/VNAV all Cats visibility ¼ mile, LNAV and Circling Cats C and D visibility ½ mile.

MISSED APPROACH: Climb to 3400 direct GRETE and hold.

AWOS-3PT <b>125.875</b>	MINNEAPOLIS CENTER <b>124.2 270.3</b>	UNICOM <b>122.8 (CTAF) ①</b>
----------------------------	--	---------------------------------



4 NM Holding Pattern		VGSI and RNAV glidepath not coincident (VGSI Angle 3.00/TCH 45).		3400 GRETE	
3400		3100		*LNAV only.	
GP 3.00°		3100		*0.9 NM to RW13	
TCH 50		*2060		RW13	
7 NM		3.3 NM		0.8 NM	
0.9 NM		0.9 NM		0.9 NM	
CATEGORY	A	B	C	D	
LPV DA	1720-¾		250 (300-¾)		
LNNAV/VNAV DA	1791-1		321 (400-1)		
LNNAV MDA	1820-1		350 (400-1)		
CIRCLING	2000-1	530 (600-1)	2240-2¼ 770 (800-2¼)	2240-2½ 770 (800-2½)	