


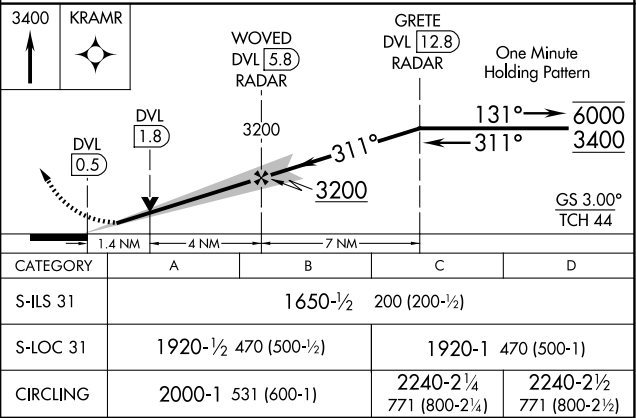
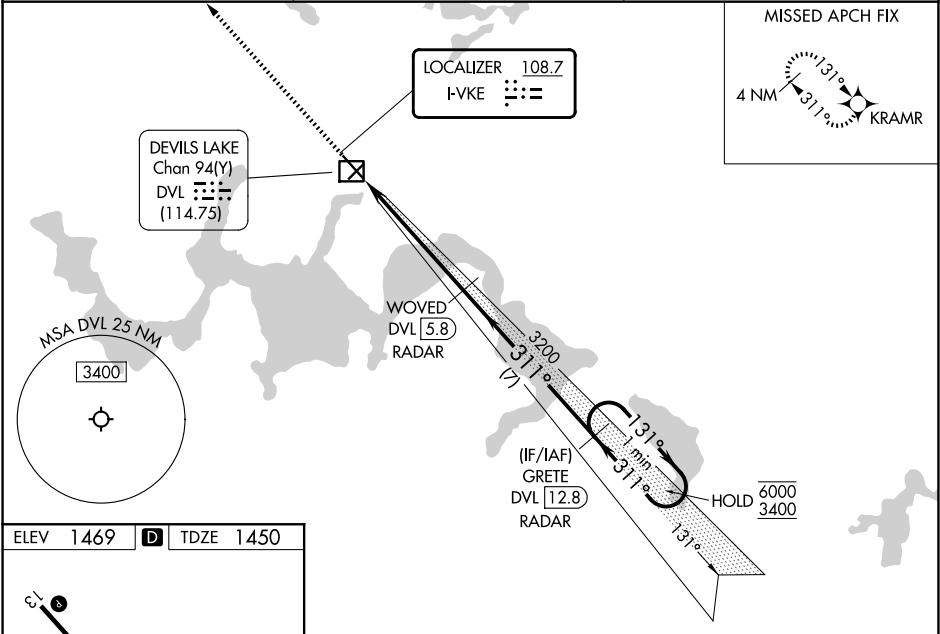
LOC I-VKE	APP CRS	Rwy Ldg	6400
108.7	311°	TDZE	1450
		Apt Elev	1469

ILS or LOC RWY 31

DEVILS LAKE RGNL (DVL)

RNP APCH - GPS.		<div>MALSR</div> <div></div>	MISSED APPROACH: Climb to 3400 direct KRAMR and hold.
DME or RADAR required.			
<div><div><div><div></div><div>NA</div></div></div></div> <div>VDP NA when using Cando altimeter setting. When local altimeter setting not received, use Cando altimeter setting and increase S-ILS 31 DA to 1711 feet; increase all MDAs 80 feet and S-LOC 31 visibility Cat C/D ½ SM, and Circling visibility Cat C/D ¼ SM. DME from DVL DME. DME use requires simultaneous reception of I-VKE and DVL DME. For inop ALS when using Cando altimeter setting, increase S-ILS 31 all Cats visibility to ¾ SM. For inop ALS, increase S-LOC 31 Cat C/D visibility to 1 ¾ SM.</div>			

AWOS-3PT	MINNEAPOLIS CENTER	UNICOM
125.875	124.2 270.3	122.8 (CTAF)



NC-1, 07 AUG 2025 to 04 SEP 2025

NC-1, 07 AUG 2025 to 04 SEP 2025