

VOR/DME MCK 115.3 Chan 100	APP CRS 294°	Rwy Idg TDZE Apt Elev	5698 2558 2583
--	------------------------	-----------------------------	---

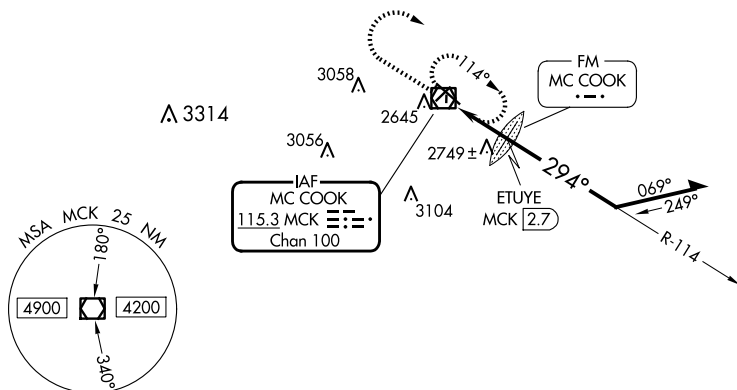
VOR RWY 30

MC COOK BEN NELSON RGNL (MCK)

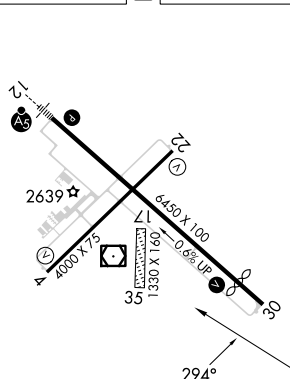
- T** VDP NA when using Imperial Muni altimeter setting. When local
A altimeter setting not received, use Imperial Muni altimeter setting:
increase all MDAs 220 feet and visibility Cat B $\frac{1}{4}$ mile and Cat
C $\frac{3}{4}$ mile. Circling NA to Rwy's 17 and 35.

MISSED APPROACH: Climb to 4500 then climbing right turn to 5000 direct MCK VOR/DME and hold.

ASOS 119.025	DENVER CENTER 132.7 226.675	UNICOM 122.8 (CTAF) 0
------------------------	---------------------------------------	---------------------------------



ELEV 2583	D	TDZE 2558
-----------	----------	-----------



REIL Rwy 30
MIRL Rwy 4-22 and 12-30

*3380 when using Imperial Muni altimeter setting.

CATEGORY	A	B	C	D
S-30	3160-1	602 (600-1)	3160-1 $\frac{3}{4}$ 602 (600-1 $\frac{3}{4}$)	NA
CIRCLING	3160-1	577 (600-1)	3360-2 $\frac{1}{4}$ 777 (800-2 $\frac{1}{4}$)	NA
ETUYE FIX MINIMUMS (DME or FM REQUIRED)				
S-30	3000-1	442 (500-1)	3000-1 $\frac{3}{8}$ 442 (500-1 $\frac{3}{8}$)	NA
CIRCLING	3040-1 457 (500-1)	3120-1 537 (600-1)	3360-2 $\frac{1}{4}$ 777 (800-2 $\frac{1}{4}$)	NA