

|  |                        |   |
|--|------------------------|---|
| WAAS<br>CH <b>56218</b><br><b>W30A</b> | APP CRS<br><b>304°</b> | Rwy Idg <b>5698</b><br>TDZE <b>2558</b><br>Apt Elev <b>2583</b> |
|--|------------------------|---|

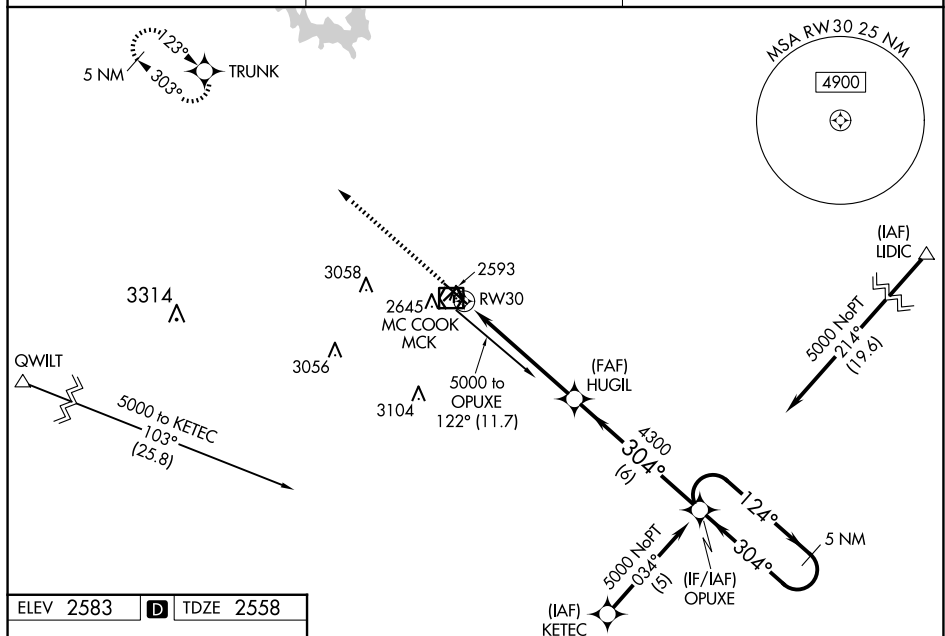
RNAV (GPS) RWY 30  
MC COOK BEN NELSON RGNL (MCK)

RNP APCH-GPS.

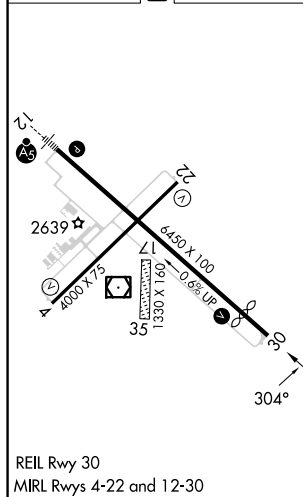
**T** When local altimeter setting not received, use Imperial Muni altimeter setting: increase LPV DA to 3023 feet, and all visibilities  $\frac{1}{2}$  SM; increase LNAV/VNAV DA to 3079 feet and all visibilities  $\frac{3}{8}$  SM; increase all MDA's 220 feet and visibility Cat C  $\frac{3}{4}$  SM. Baro-VNAV and VDP NA when using Imperial Muni altimeter setting. Circling NA to Rwys 17 and 35. For uncompensated Baro-VNAV systems, LNAV/VNAV NA below -20°C or above 54°C.

**MISSED APPROACH:** Climb to 5000 direct TRUNK and hold.

|                        |                                       |                                 |
|------------------------|---------------------------------------|---------------------------------|
| ASOS<br><b>119.025</b> | DENVER CENTER<br><b>132.7 226.675</b> | UNICOM<br><b>122.8 (CTAF) 0</b> |
|------------------------|---------------------------------------|---------------------------------|



|           |          |           |
|-----------|----------|-----------|
| ELEV 2583 | <b>D</b> | TDZE 2558 |
|-----------|----------|-----------|

[illegible]