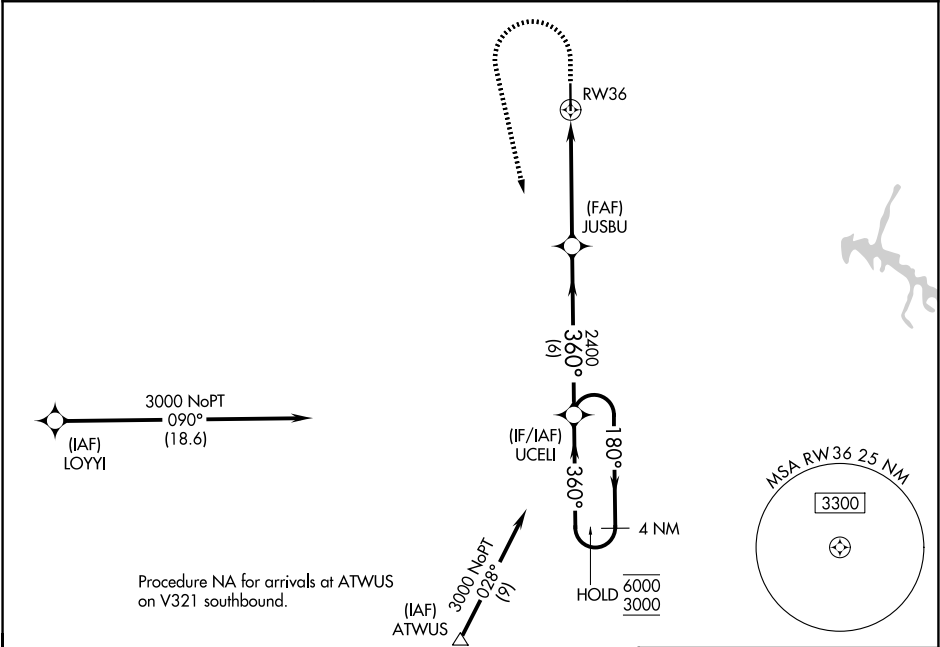
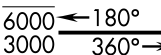
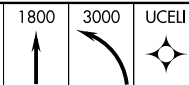
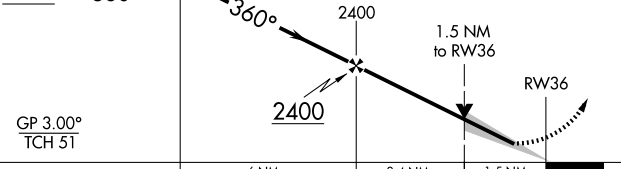


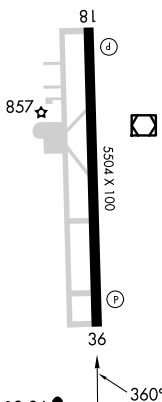
WAAS CH 97607 W36A	APP CRS 360°	Rwy Ldg TDZE Apt Elev	5504 800 800
--	------------------------	-----------------------------	---

RNAV (GPS) Z RWY 36
BOMAR FLD/SHELBYVILLE MUNI (SYI)

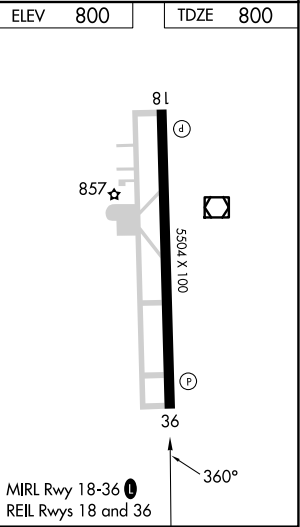
RNP APCH - GPS.		MISSED APPROACH: Climb to 1800 then climbing left turn to 3000 direct UCELL and hold.
▼ ▲ For uncompensated Baro-VNAV systems, LNAV/VNAV NA below -16°C or above 54°C.		
AWOS-3 119.275	NASHVILLE APP CON 118.4 360.7	UNICOM 122.8 (CTAF) 0



ELEV 800		TDZE 800		
4 NM Holding Pattern		VGSI and RNAV glidepath not coincident (VGSI Angle 3.00/TCH 30).		
				
GP 3.00° TCH 51				
CATEGORY	A	B	C	D
LPV DA	1000-3/4 200 (200-3/4)			
LNAV/VNAV DA	1211-1 1/8 411 (500-1 1/8)			
LNAV MDA	1300-1 500 (500-1)		1300-1 3/8 500 (500-1 3/8)	
CIRCLING	1300-1 500 (500-1)	1360-1 560 (600-1)	1780-3	980 (1000-3)



MIRL Rwy 18-36
REIL Rwy 18 and 36



SE-1, 07 AUG 2025 to 04 SEP 2025

SE-1, 07 AUG 2025 to 04 SEP 2025