

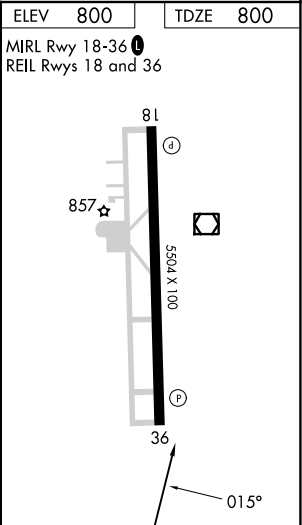
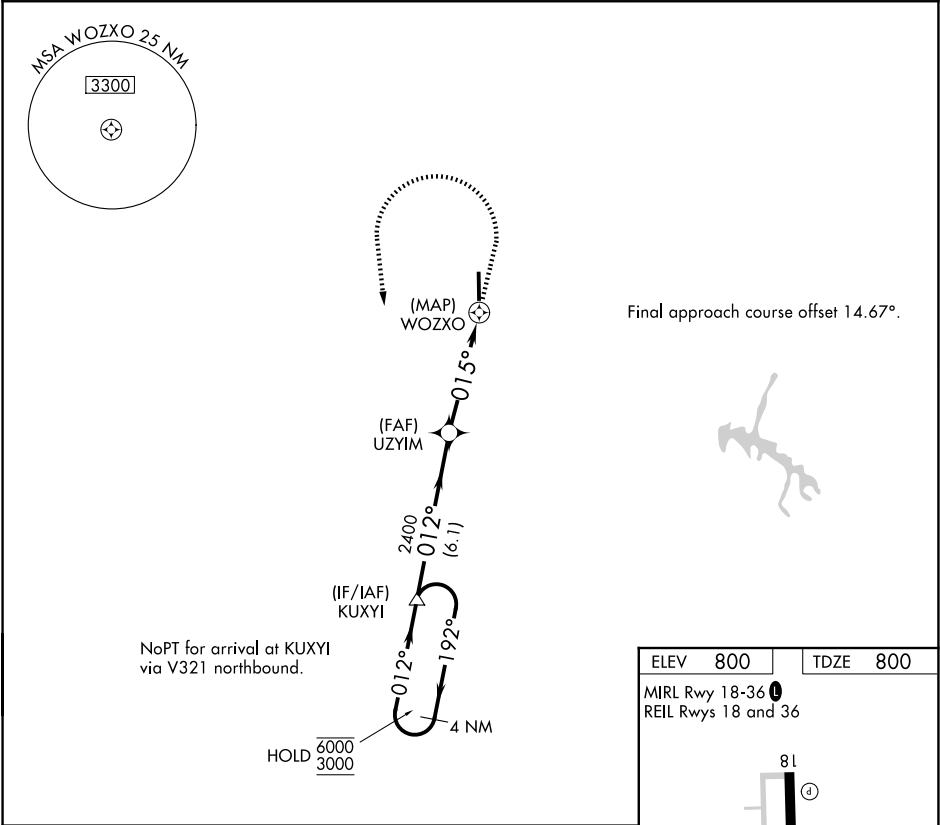
APP CRS	Rwy Ldg	5504
015°	TDZE	800
	Apt Elev	800

RNAV (GPS) Y RWY 36

BOMAR FLD/SHELBYVILLE MUNI (SYI)

RNP APCH - GPS.	MISSED APPROACH: Climb to 1800 then climbing left turn to 3000 direct KUXYI and hold.
-----------------	---

AWOS-3 119.275	NASHVILLE APP CON 118.4 360.7	UNICOM 122.8 (CTAF) 0
-------------------	----------------------------------	--------------------------



4 NM Holding Pattern		VGSI and descent angles not coincident (VGSI Angle 3.00/TCH 30).		1800	3000	KUXYI
6000 ← 192°		012°		3.00 NM TCH 45		0.9 NM to WOZ XO
3000 → 012°		2400		015°		WOZ XO
		6.1 NM		3.5 NM		0.9 0.5
CATEGORY	A	B	C	D		
LNAV MDA	1260-1	460 (500-1)	1260-1 ³ / ₈	460 (500-1 ³ / ₈)		
CIRCLING	1260-1 460 (500-1)	1360-1 560 (600-1)	1780-3	980 (1000-3)		