

WAAS CH <b>82525</b> <b>W31A</b>	APP CRS <b>311°</b>	Rwy Idg <b>5497</b> TDZE <b>1444</b> Apt Elev <b>1445</b>
--	------------------------	---

RNAV (GPS) RWY 31  
PARK RAPIDS MUNI/KONSHOK FLD (PKD)

RNP APCH.

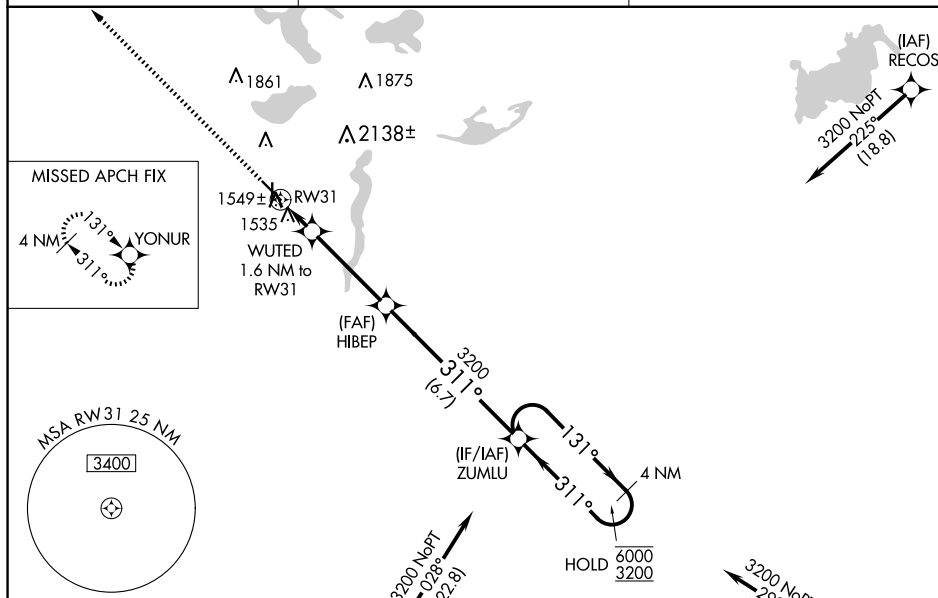
- T** For uncompensated Baro-VNAV systems, LNAV/VNAV NA below -17°C or above 34°C.  
**A** Circling Rwy 18, 36 NA at night.  
 For inop ALS, increase LNAV/VNAV all Cats visibility to  $\frac{3}{8}$  SM and LNAV Cat C/D visibility to 1 SM.

MALSR

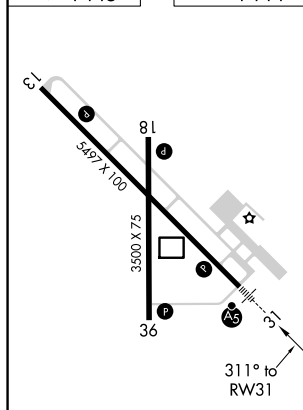


**MISSED APPROACH:**  
Climb to 3300 direct  
YONUR and hold.

ASOS <b>119.25</b>	MINNEAPOLIS CENTER <b>134.75 251.1</b>	UNICOM <b>123.0 (CTAF) 0</b>
-----------------------	---	---------------------------------



ELEV 1445		TDZE 1444
-----------	--	-----------



HIRL Rwy 13-31 **L**  
MIRL Rwy 18-36 **L**  
REIL Rwy 13, 18 and 36 **L**

3300 YONUR

VGSI and RNAV glidepath not coincident  
(VGSI Angle 3.00/TCH 48).

WUTED  
1.6 NM to RW31

HIBEP  
3200

ZUMLU

4 NM Holding Pattern

\*INAV only.

\*1 NM to RW31

RW31

2000\*

131° → 6000  
← 311° 3200

GP 3.00°  
TCH 53

1 NM 0.6 3.8 NM 6.7 NM