

WAAS CH 78422 W34A	APP CRS 344°	Rwy Idg 4125 TDZE 138 Apt Elev 141
--	------------------------	---

RNAV (GPS) RWY 34

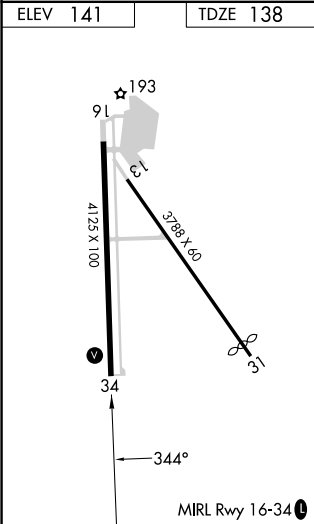
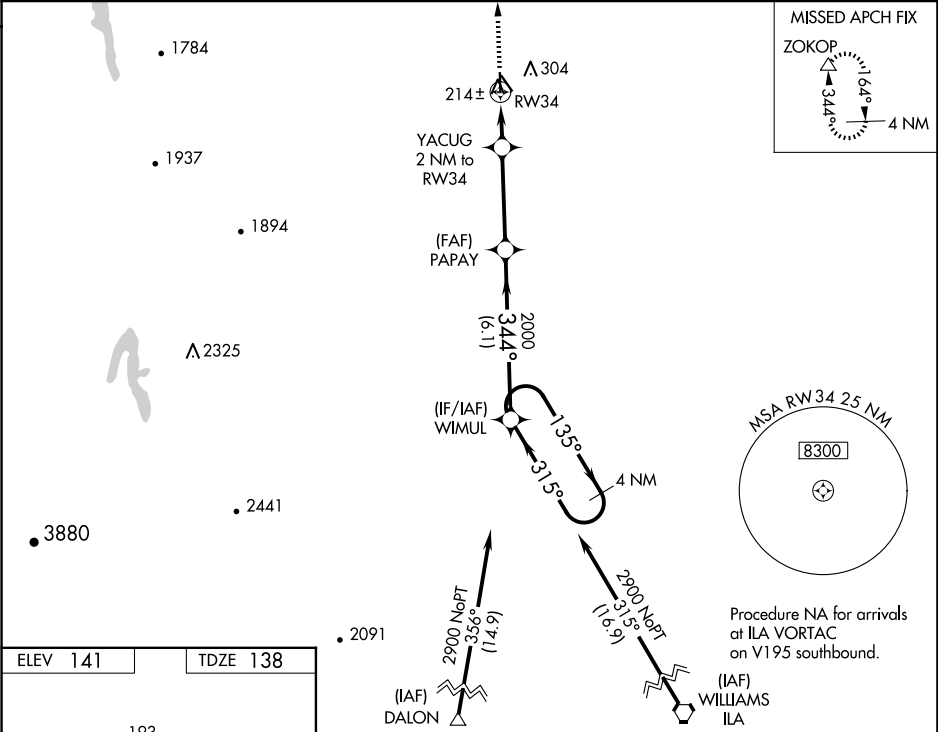
WILLOWS/GLENN COUNTY (WLW)

When Oroville Muni altimeter setting not received, procedure NA.

Baro-VNAV NA. DME/DME RNP-0.3 NA. Use Oroville altimeter setting.

MISSED APPROACH: Climb to 3000 direct ZOKOP and hold.

OVE ASOS 121.425	OAKLAND CENTER 132.2 350.3	UNICOM 122.8 (CTAF) 0
----------------------------	--------------------------------------	--



3000 ZOKOP * LNAV only.	VGSI and RNAV glidepath not coincident (VGSI Angle 3.00/TCH 31).			WIMUL	4 NM Holding Pattern
	YACUG 2 NM to RW34	PAPAY 2000	2000	135° ←315°	2900
	800*	344°	2000	GP 3.00° TCH 40	
	2 NM	3.7 NM	6.1 NM		
CATEGORY	A	B	C	D	
LPV DA	460-1½ 322 (400-1½)			NA	
LNAV/ VNAV DA	460-1½ 322 (400-1½)			NA	
LNAV MDA	540-1	402 (400-1)	540-1½ 402 (400-1½)	NA	
CIRCLING	680-1	539 (600-1)	680-1½ 539 (600-1½)	NA	