

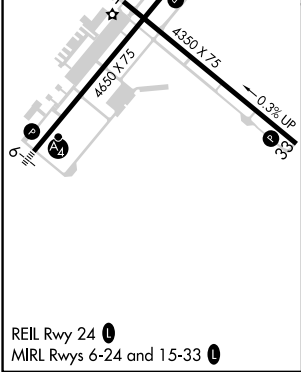
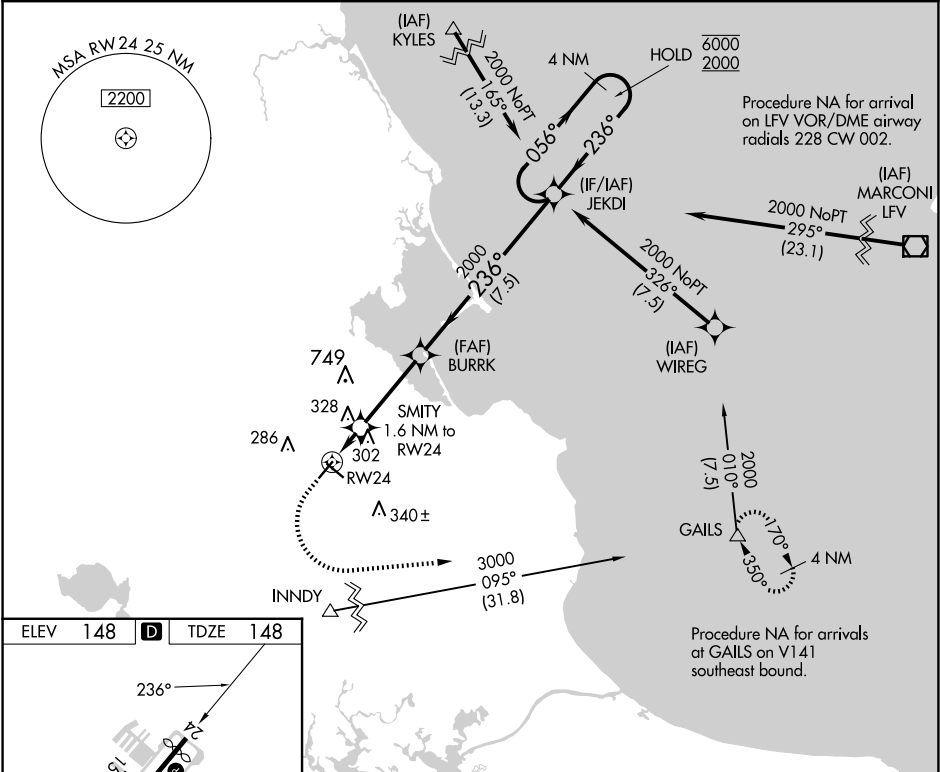
APP CRS	Rwy Idg	4350
236°	TDZE	148
	Apt Elev	148

RNAV (GPS) RWY 24

PLYMOUTH MUNI (PYM)

RNP APCH - GPS.	MISSED APPROACH: Climb to 640 then climbing left turn to 2000 direct GAILS and hold.
<div><div>▼</div><div>▲</div></div> Rwy 24 helicopter visibility reduction below 1 SM NA. Circling Rwy 15 NA at night.	

ASOS 135.625	BOSTON APP CON 118.2 284.6	CLNC DEL 127.75	UNICOM 122.725 (CTAF)	122.9
-----------------	-------------------------------	--------------------	--------------------------	-------



ELEV 148	TDZE 148
236°	236°
4350 X 75	4350 X 75
0.3% UP	0.3% UP
640	2000
GAILS	VGSI and RNAV glidepath not coincident (VGSI Angle 4.00/TCH 40).
BURRK	JEKDI
SMITY 1.6 NM to RW24	SMITY 1.6 NM to RW24
RW24	RW24
780	780
1.6 NM	3.4 NM
7.5 NM	7.5 NM
4 NM Holding Pattern	4 NM Holding Pattern
056°	056°
236°	236°
6000	6000
2000	2000
3.40° TCH 60	3.40° TCH 60
CATEGORY	A
CATEGORY	B
CATEGORY	C
CATEGORY	D
INAV MDA	580-1
INAV MDA	432 (500-1)
INAV MDA	580-1¼
INAV MDA	432 (500-1¼)
INAV MDA	760-1¾
INAV MDA	612 (700-1¾)
CIRCLING	620-1
CIRCLING	472 (500-1)
CIRCLING	640-1
CIRCLING	492 (500-1)
CIRCLING	760-1¾
CIRCLING	612 (700-1¾)