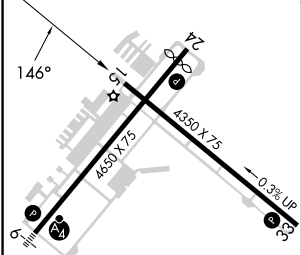
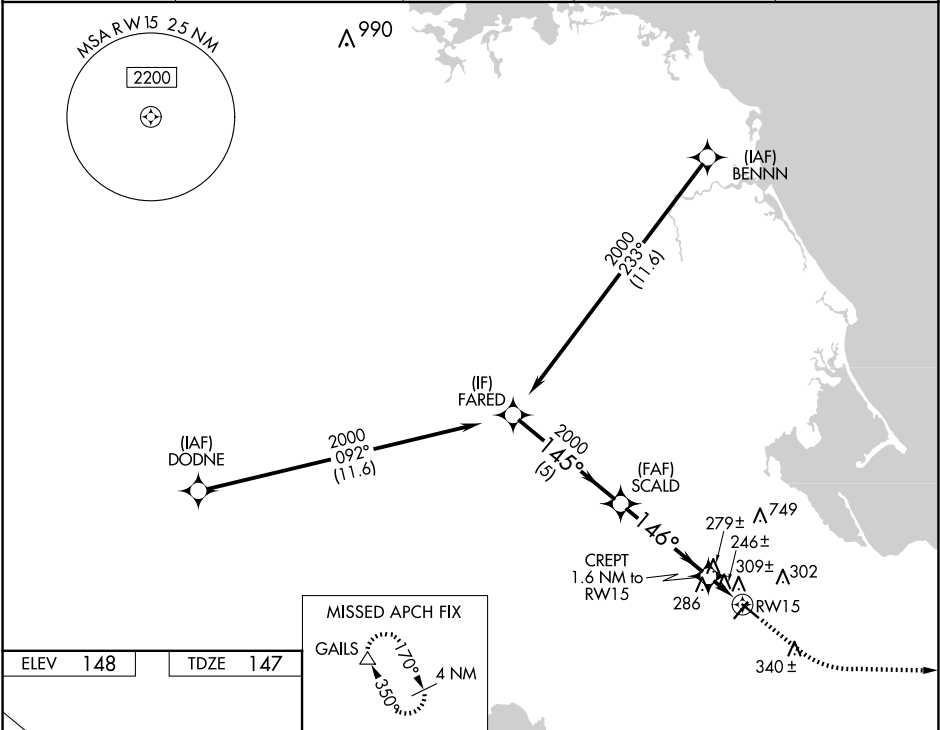


WAAS CH <b>93639</b> <b>W15A</b>	APP CRS <b>146°</b>	Rwy Idg TDZE <b>147</b> Apt Elev <b>148</b>	<b>4350</b>
--	------------------------	---	-------------

RNAV (GPS) RWY 15  
PLYMOUTH MUNI (PYM)

RNP APCH - GPS.	MISSED APPROACH: Climb to 600 then climbing left turn to 2000 direct GAILS and hold.
<div><div>▼</div><div>▲</div></div> Rwy 15 helicopter visibility reduction below 1 SM NA. Straight-in Rwy 15 NA at night, Circling Rwy 15 NA at night.	

ASOS <b>135.625</b>	BOSTON APP CON <b>118.2 284.6</b>	CLNC DEL <b>127.75</b>	UNICOM <b>122.725 (CTAF)</b>	<b>122.9</b>
------------------------	--------------------------------------	---------------------------	---------------------------------	--------------



Visual Segment - Obstacles.				600	2000	GAILS
CATEGORY	A	B	C	D		
LP MDA	500-1 353 (400-1)				NA	
LNAV MDA	560-1 413 (500-1)		560-1 $\frac{1}{8}$ 413 (500-1 $\frac{1}{8}$ )		NA	
CIRCLING	620-1 472 (500-1)	640-1 492 (500-1)	760-1 $\frac{3}{4}$ 612 (700-1 $\frac{3}{4}$ )		NA	

REIL Rwy 24   
MIRL Rwy 6-24 and 15-33