
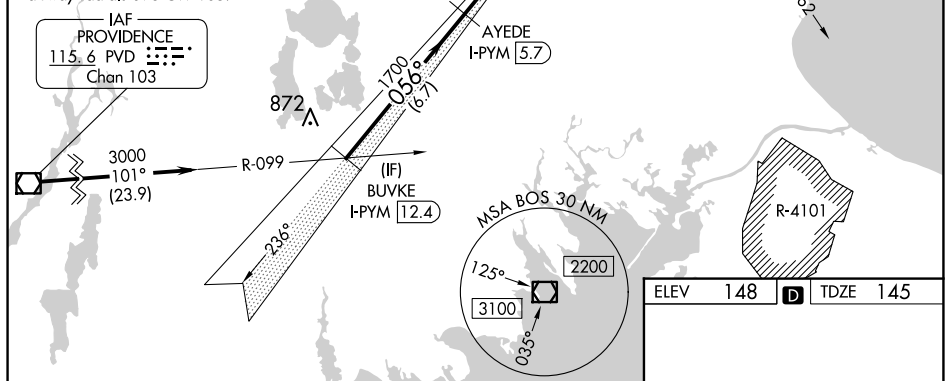


ILS or LOC RWY 6  
PLYMOUTH MUNI (PYM)

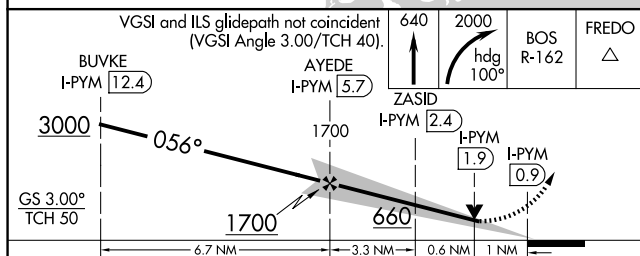
**MISSED APPROACH:** Climb to 640 then climbing right turn to 2000 on heading 100° and on BOS VOR/DME R-162 to FREDO INT/BOS 32.6 DME and hold.

ALTERNATE MISSED APCH FIX

IAF  
PROVIDENCE  
115.6 PVD   
Chan 103



ELEV	148		TDZE	145
------	-----	---	------	-----



REIL Rwy 24 **L**  
MIRL Rwys 6-24 and 15-33 **L**

NE-1, 07 AUG 2025 to 04 SEP 2025