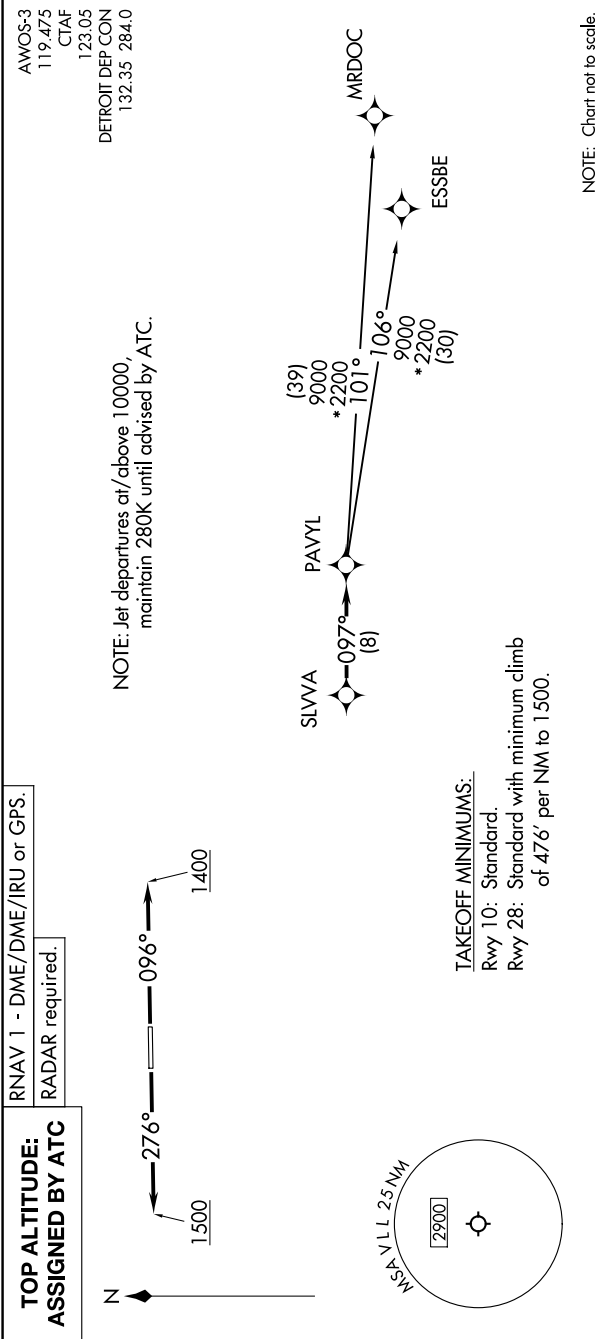


EC-1, 07 AUG 2025 to 04 SEP 2025



DEPARTURE ROUTE DESCRIPTION

TAKEOFF RUNWAY 10: Climb on heading 096° to 1400 then as assigned by ATC, thence....
TAKEOFF RUNWAY 28: Climb on heading 276° to 1500 then as assigned by ATC, thence....
....for RADAR vectors to SLWA, then on track 097° to PAVYL, then on (transition). Maintain 17000 or as assigned by ATC,
expect filed altitude 10 minutes after departure.
ESSBE TRANSITION (PAVYL3.ESSBE):
MRDOC TRANSITION (PAVYL3.MRDOC):

EC-1, 07 AUG 2025 to 04 SEP 2025