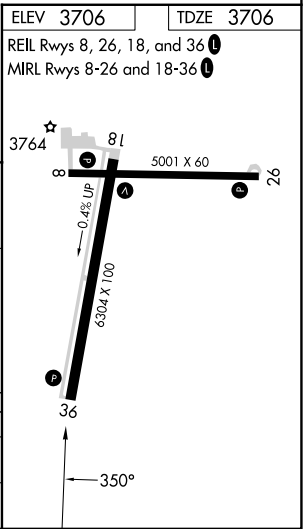
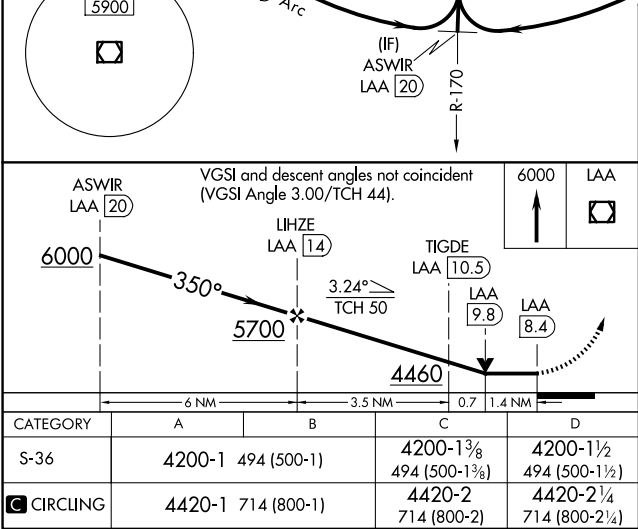
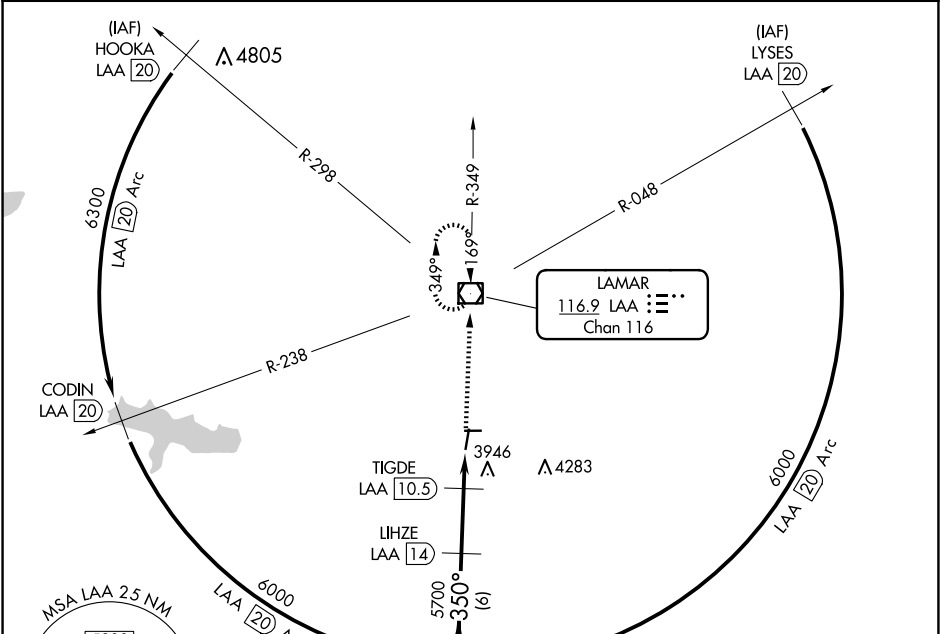


VOR/DME LAA	APP CRS	Rwy Idg	6304
116.9	350°	TDZE	3706
Chan 116		Apt Elev	3706

VOR RWY 36
SOUTHEAST COLORADO RGNL (LAA)

DME required.	MISSED APPROACH: Climb to 6000 direct LAA VOR/DME and hold.
Rwy 36 helicopter visibility reduction below ¾ SM NA.	

ASOS 135.625	DENVER CENTER 133.4 377.175	UNICOM 122.8 (CTAF) 0
-----------------	--------------------------------	--------------------------



SW-1, 07 AUG 2025 to 04 SEP 2025

SW-1, 07 AUG 2025 to 04 SEP 2025