

VOR/DME LAA	APP CRS	Rwy Idg	6304
116.9	169°	TDZE	3695
Chan 116		Apt Elev	3706

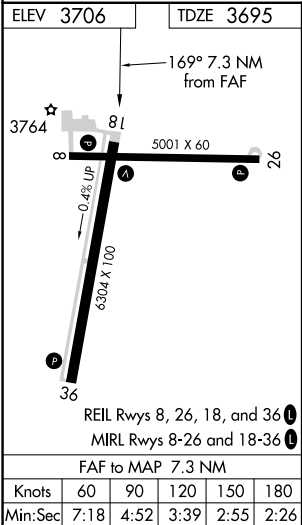
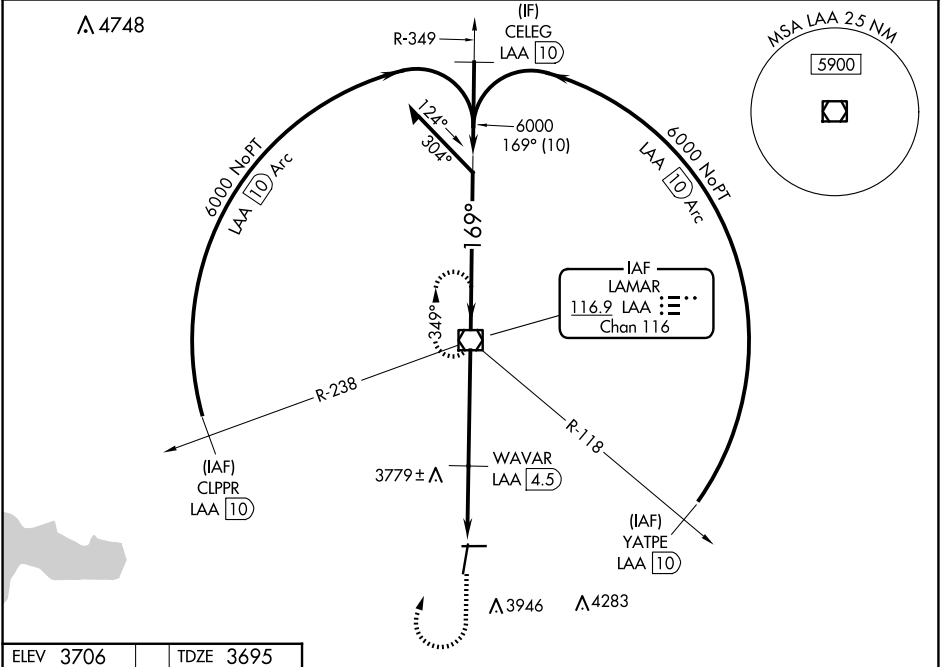
VOR RWY 18  
SOUTHEAST COLORADO RGNL (LAA)




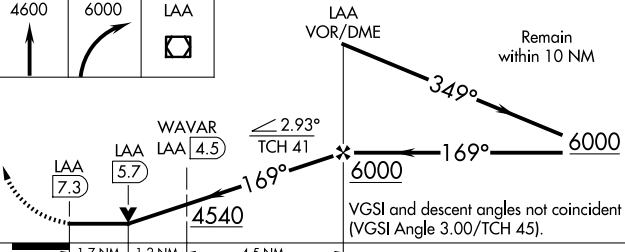


⚠

⚠

MISSED APPROACH: Climb to 4600 then climbing right turn to 6000 direct LAA VOR/DME and hold.

ASOS 135.625	DENVER CENTER 133.4 377.175	UNICOM 122.8 (CTAF) 0
-----------------	--------------------------------	--------------------------



4600	6000	LAA				
						
						
			VGSI and descent angles not coincident (VGSI Angle 3.00/TCH 45).			
CATEGORY	A	B	C	D		
S-18	4540-1 845 (900-1)	4540-1¼ 845 (900-1¼)	4540-2½ 845 (900-2½)	4540-2¾ 845 (900-2¾)		
 CIRCLING	4540-1¼	834 (900-1¼)	4540-2½ 834 (900-2½)	4540-2¾ 834 (900-2¾)		
DME MINIMUMS						
S-18	4260-1	565 (600-1)	4260-1⅝ 565 (600-1⅝)	4260-1¾ 565 (600-1¾)		
 CIRCLING	4420-1	714 (800-1)	4420-2 714 (800-2)	4420-2¼ 714 (800-2¼)		

SW-1, 07 AUG 2025 to 04 SEP 2025

SW-1, 07 AUG 2025 to 04 SEP 2025