

WAAS
CH **86613**
W18A

APP CRS
183°

Rwy Idg
TDZE **3695**
Apt Elev **3706**

RNAV (GPS) RWY 18

SOUTHEAST COLORADO RGNL (LAA)

RNP APCH.

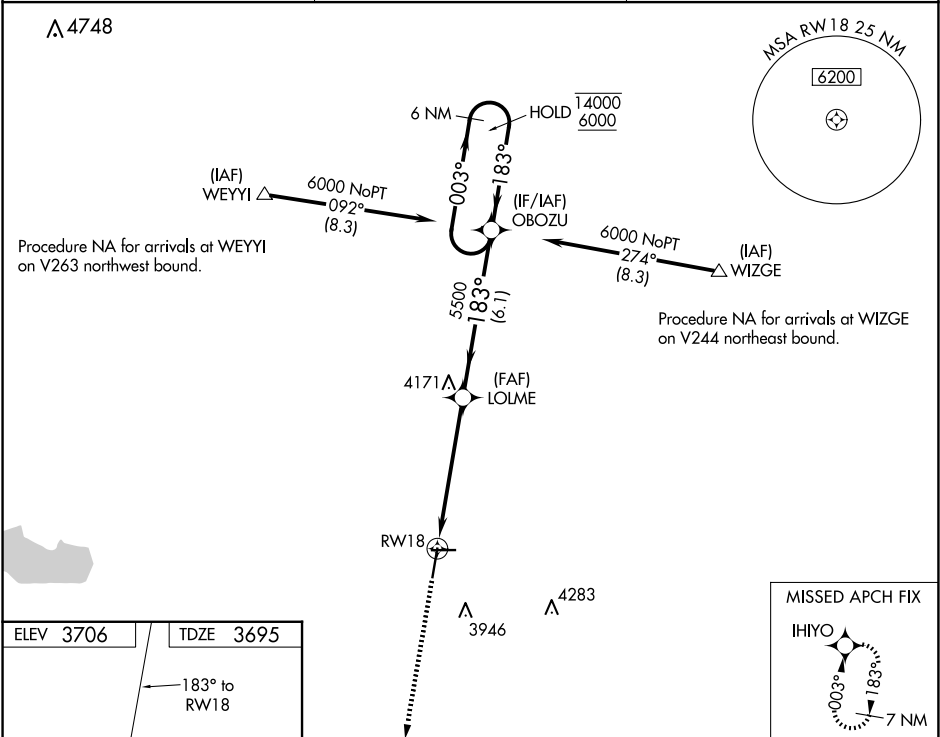
▼

▲

For uncompensated Baro-VNAV systems, LNAV/VNAV NA below -22°C or above 54°C.

MISSED APPROACH: Climb to 6200 direct IHIYO and hold.

ASOS 135.625	DENVER CENTER 133.4 377.175	UNICOM 122.8 (CTAF) 1
------------------------	---------------------------------------	---------------------------------



6200

IHIYO

VGSI and RNAV glidepath not coincident (VGSI Angle 3.00/TCH 45).

*LNAV only.

1.7 NM to RW18

RW18

LOLME

5500

OBOZU

6 NM Holding Pattern

003°

183°

14000

6000

GP 3.05°

TCH 41

1.7 NM

3.8 NM

6.1 NM

CATEGORY	A	B	C	D
LPV DA	3945-1 250 (300-1)			
LNAV/VNAV DA	4014-1¼ 319 (400-1¼)			
LNAV MDA	4260-1 565 (600-1)		4260-1½ 565 (600-1½)	

REIL Rwy 8, 26, 18, and 36 1

MIRL Rwy 8-26 and 18-36 1