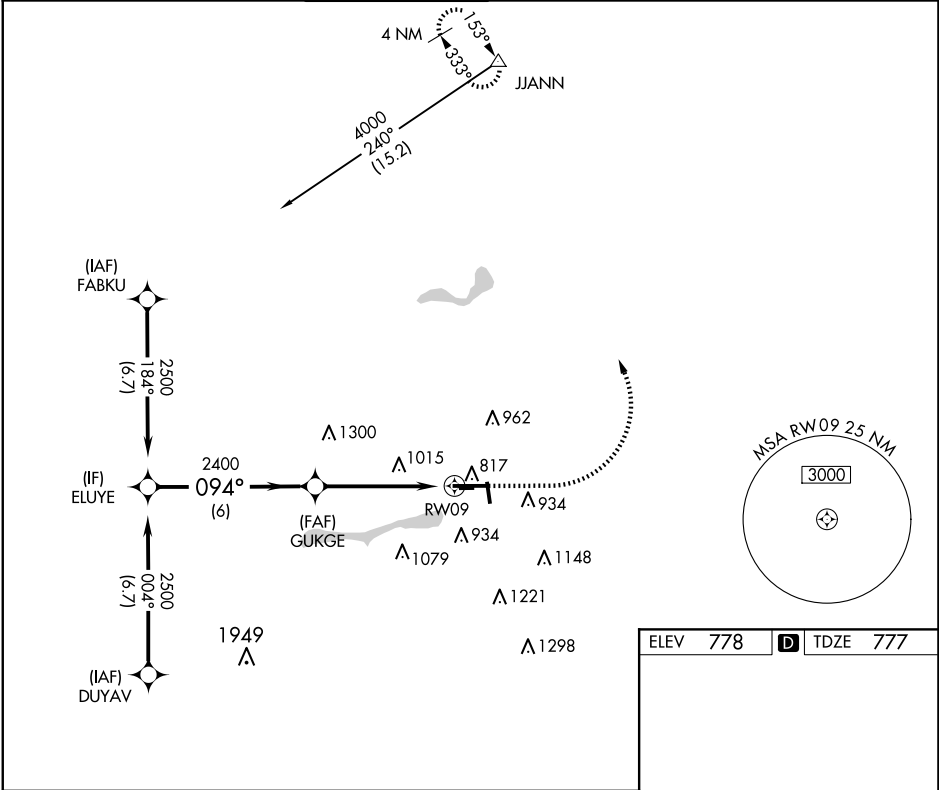


APP CRS	Rwy Ldg	6500
094°	TDZE	777
	Apt Elev	778

RNAV (GPS) RWY 9  
ELKHART MUNI (EKM)

RNP APCH - GPS.						MISSED APPROACH: Climb to 1500 then climbing left turn to 4000 direct JJANN and hold.	
<div>▼</div>	Circling NA to Rwy 8 and 26. Circling Rwy 36 NA at night. Rwy 9 helicopter visibility reduction below ¾ SM NA. VDP NA when using SBN altimeter setting. When local altimeter setting not received, use SBN altimeter setting: increase all MDAs 40 feet and LNAV visibility Cat C/D ¼ SM, and Circling visibility Cat D ¼ SM.						
<div>▲</div>							
AWOS-3	SOUTH BEND APP CON ★		ELKHART TOWER ★	GND CON	CLNC DEL	CLNC DEL	UNICOM
124.475	118.55 257.8		119.5 (CTAF) 0	121.8	121.8	119.7 (When twr closed)	122.95



CATEGORY	A	B	C	D
LNAV MDA	1280-1	503 (600-1)	1280-1 $\frac{3}{8}$	503 (600-1 $\frac{3}{8}$ )
CIRCLING	1280-1 502 (600-1)	1300-1 522 (600-1)	1380-1 $\frac{3}{4}$ 602 (700-1 $\frac{3}{4}$ )	1580-2 $\frac{1}{2}$ 802 (900-2 $\frac{1}{2}$ )

