

WAAS CH 50107 W27A	APP CRS 274°	Rwy Ldg TDZE 778 Apt Elev 778
--	------------------------	---

RNAV (GPS) RWY 27

ELKHART MUNI (EKM)

RNP APCH - GPS.

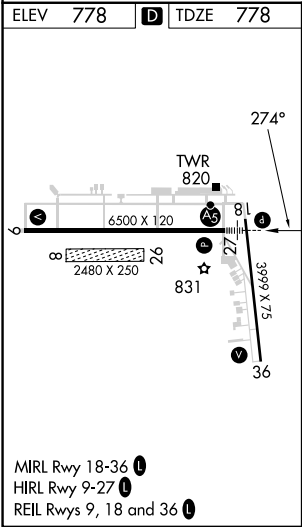
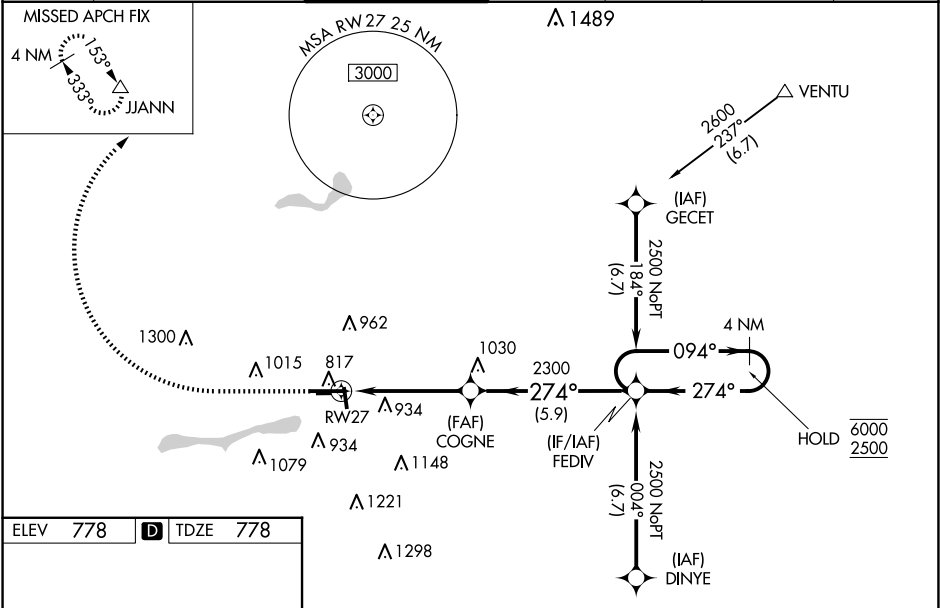
▼ Baro-VNAV and VDP NA when using SBN altimeter setting. Circling NA to Rwy 8 and 26.

⚠ For uncompensated Baro-VNAV systems, LNAV/VNAV NA below -16°C or above 54°C. Rwy 27 helicopter visibility reduction below RVR 4000 NA. Circling Rwy 36 NA at night. When local altimeter setting not received, use SBN altimeter setting: increase LPV DA to 1105 feet; increase LNAV/VNAV DA to 1255 feet and all visibilities to RVR 5000; increase all MDA 40 feet and LNAV visibility Cat C/D to RVR 5500 and Circling Cat D visibility ½ SM. For inop ALS, increase LPV all Cats visibility to RVR 4500, LNAV Cat A/B visibility RVR 5500 and Cat C/D to 1½ SM. For inop ALS when using SBN altimeter setting, increase LNAV/VNAV all Cats visibility to 1½ SM and LNAV Cat A/B to RVR 5500.

MALS R

MISSED APPROACH:
Climb to 1500 then climbing right turn to 4000 to JJANN and hold.

AWOS-3 124.475	SOUTH BEND APP CON ★ 118.55 257.8	ELKHART TOWER ★ 119.5 (CTAF) 0	GND CON 121.8	CLNC DEL 121.8	CLNC DEL 119.7 (When twr closed)	UNICOM 122.95
--------------------------	---	--	-------------------------	--------------------------	---	-------------------------



1500 ↑	4000 ↷	JJANN △	4 NM Holding Pattern			

EC-2, 07 AUG 2025 to 04 SEP 2025

EC-2, 07 AUG 2025 to 04 SEP 2025