

DIXON, ILLINOIS

AL-5285 (FAA)

24025

WAAS CH <b>42821</b> <b>W08A</b>	APP CRS <b>082°</b>	Rwy Idg TDZE Apt Elev	<b>3897</b> <b>782</b> <b>785</b>
--	------------------------	-----------------------------	---

RNAV (GPS) RWY 8

DIXON MUNI-CHARLES R WALGREEN FLD (C73)

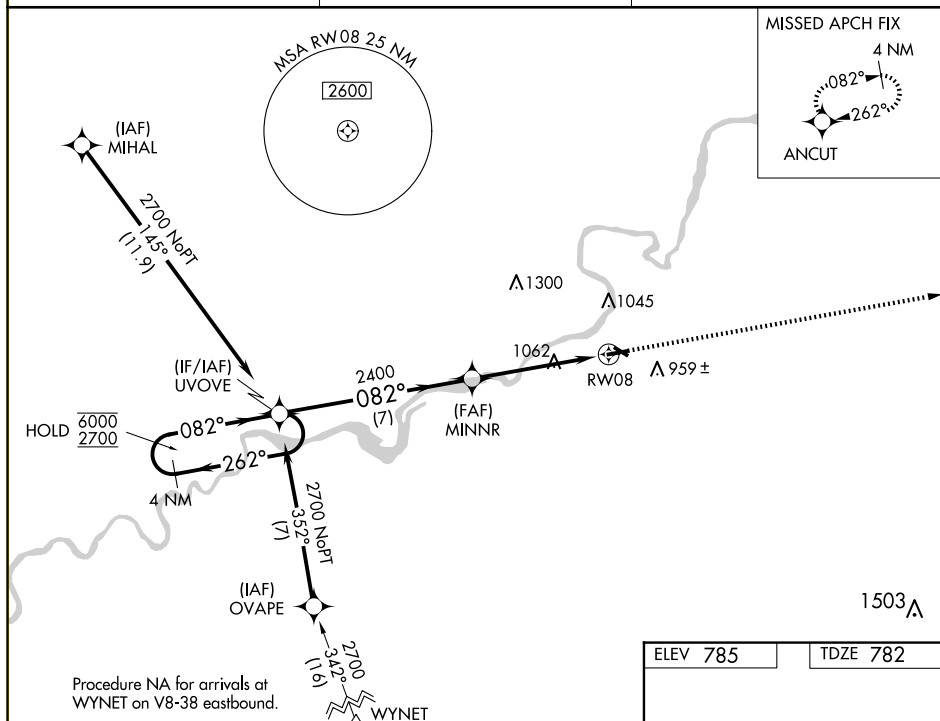
RNP APCH - GPS	
----------------	--

**T** Rwy 8 helicopter visibility reduction below  $\frac{3}{4}$  SM NA. When local altimeter setting not received, use Rochelle altimeter setting and increase all MDAs 40 feet and Circling visibility Cat C  $\frac{1}{4}$  SM. VDP NA when using Rochelle altimeter setting.

MISSED APPROACH: Climb to 2700  
direct ANCUT and hold.

AWOS-AV  
118.575

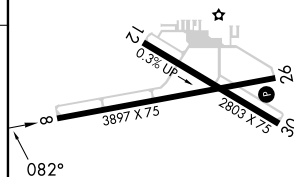
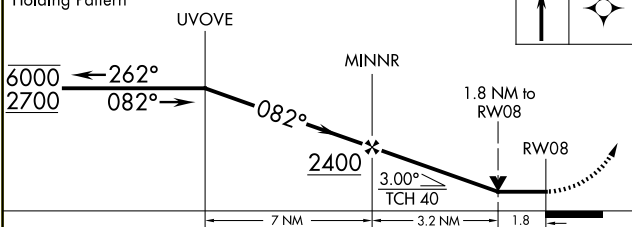
ROCKFORD APP CON  
126.0 327.0

UNICOM  
123.05 (CTAF) **L**

EC-3, 07 AUG 2025 to 04 SEP 2025

4 NM  
Holding Pattern

2700	ANCUT
------	-------



CATEGORY	A	B	C	D
LP MDA	1380-1	598 (600-1)	1380-1 $\frac{3}{4}$ 598 (600-1 $\frac{3}{4}$ )	NA
LNAV MDA	1380-1	598 (600-1)	1380-1 $\frac{3}{4}$ 598 (600-1 $\frac{3}{4}$ )	NA
CIRCLING	1380-1 595 (600-1)	1400-1 615 (700-1)	1420-1 $\frac{3}{4}$ 635 (700-1 $\frac{3}{4}$ )	NA

REIL Rwy 8 **L**  
MIRL Rws 8-26 and 12-30 **L**

DIXON, ILLINOIS  
Amdt 2 25JAN24

DIXON MUNI-CHARLES R WALGREEN FLD (C73)

41°50'N-89°27'W

RNAV (GPS) RWY 8