

WAAS CH 65712 W26A	APP CRS 262°	Rwy Idg TDZE 784 Apt Elev 785
--	------------------------	---

RNAV (GPS) RWY 26

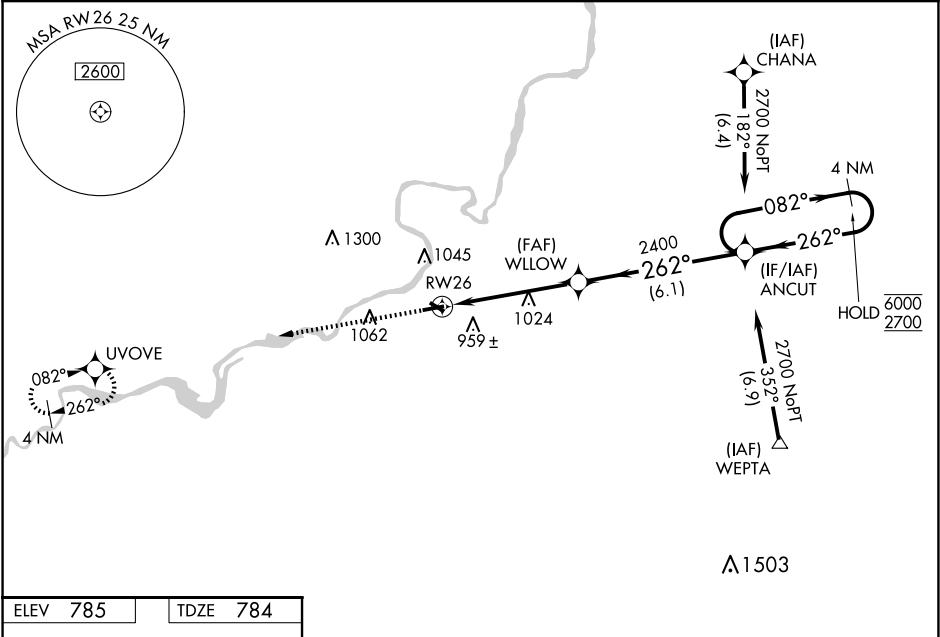
DIXON MUNI-CHARLES R WALGREEN FLD (C73)

RNP APCH - GPS.

Baro-VNAV and VDP NA when using Rochelle altimeter setting. Rwy 26 helicopter visibility reduction below ¾ SM NA. For uncompensated Baro-VNAV systems, LNAV/VNAV NA below -16°C or above 54°C. When local altimeter setting not received, use Rochelle altimeter setting and increase LPV DA to 1074 feet and all visibilities ½ SM; increase LNAV/VNAV DA to 1266 feet; increase all MDAs 40 feet and LNAV visibility Cat C ½ SM, and Circling visibility Cat C ¼ SM.

MISSED APPROACH:
Climb to 2700 direct UVOVE and hold.

AWOS-AV 118.575	ROCKFORD APP CON 126.0 327.0	UNICOM 123.05 (CTAF) 0
---------------------------	--	---



ELEV 785	TDZE 784
-----------------	-----------------

2700

UVOVE

VGSI and RNAV glidepath not coincident (VGSI Angle 3.00/TCH 21).

4 NM Holding Pattern

ANCUT

WILLOW

RW26

1.5 NM to RW26

2400

2400

1.5 NM

3.5 NM

6.1 NM

262°

082°

262°

GP 3.00° TCH 40

CATEGORY	A	B	C	D
LPV DA	1034-¾ 250 (300-¾)			NA
LNAV/VNAV DA	1226-1⅜ 442 (500-1⅜)			NA
LNAV MDA	1280-1	496 (500-1)	1280-1⅜ 496 (500-1⅜)	NA
CIRCLING	1300-1 515 (600-1)	1400-1 615 (700-1)	1420-1¼ 635 (700-1¼)	NA

REIL Rwy 8 **0**
MIRL Rwy 8-26 and 12-30 **0**