

WAAS CH 82613 W27A	APP CRS 276°	Rwy Idg TDZE Apt Elev	5000 753 755
--	------------------------	-----------------------------	---

RNAV (GPS) RWY 27

MOUNT PLEASANT MUNI (MOP)

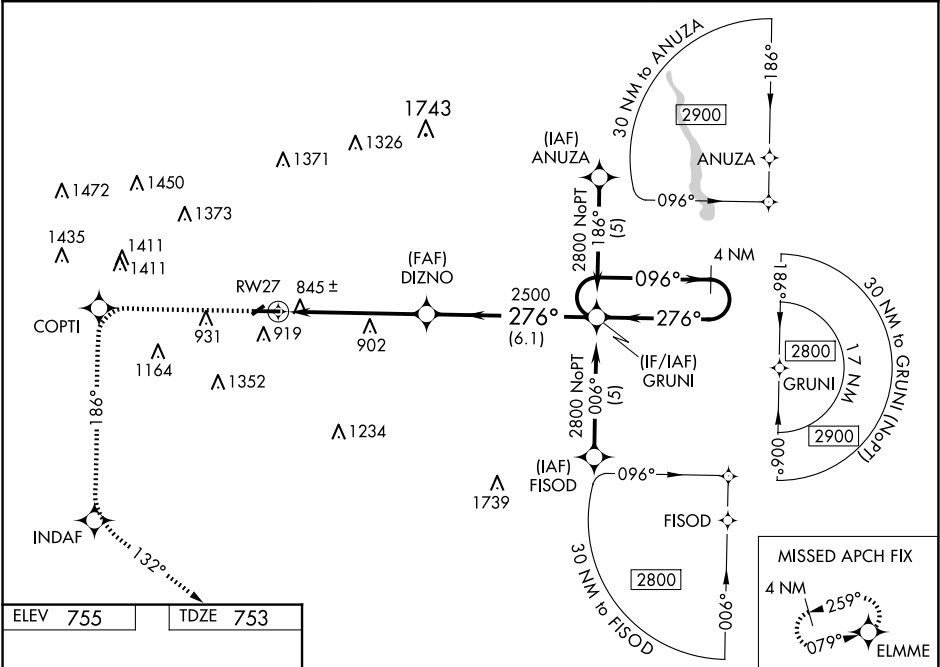
▼

▲

For uncompensated Baro-VNAV systems, LNAV/VNAV NA below -16°C (4°F) or above 47°C (116°F). DME/DME RNP-0.3 NA. When local altimeter setting not received, use Alma altimeter setting and increase all DA 42 feet and all MDA 60 feet, increase LPV, LNAV/VNAV all Cats, LNAV Cat D and Circling Cat C visibilities ¼ mile. Baro-VNAV and VDP NA when using Alma altimeter setting. Circling NA to Rwy's 5 and 23.

MISSED APPROACH: Climb to 3000 direct COPTI and via 186° track direct INDAF and via 132° track to ELMME and hold.

AWOS-3 133.025	GREAT LAKES APP CON ★ 126.45 235.625	UNICOM 123.0 (CTAF) 0
--------------------------	--	---------------------------------



ELEV 755	TDZE 753
-----------------	-----------------

3000	COPTI	tr 186°	INDAF	tr 132°	ELMME	GRUNI	4 NM Holding Pattern
*LNAV only		DIZNO		GP 3.00° TCH 37			
RW27		2500					
1.2 NM		4.1 NM		6.1 NM			
CATEGORY	A		B		C		D
LPV DA	1099-1¼		346 (400-1¼)				
LNAV/VNAV DA	1201-1½		448 (500-1½)				
LNAV MDA	1160-1		407 (500-1)		1160-1¼		407 (500-1¼)
CIRCLING	1240-1		485 (500-1)		1400-1¾ 645 (700-1¾)		1700-3 945 (1000-3)

REIL Rwy 9 and 27

MIRL Rwy 9-27

REIL Rwy's 9 and 27
MIRL Rwy 9-27