

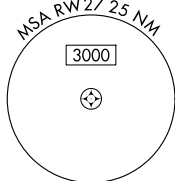
23334

RNAV (GPS) RWY 27  
WARSAW MUNI (ASW)

**T** Circling Rwy 18, 36 NA at night. For uncompensated Baro-VNAV systems, **A** INAV/VNAV NA below -16°C or above 54°C.

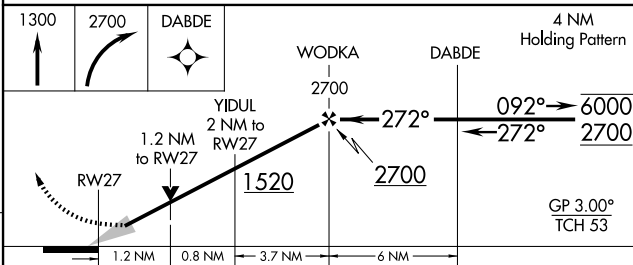
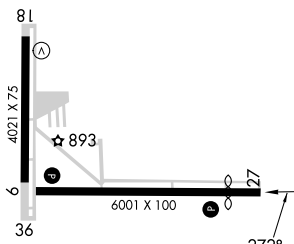
**MISSED APPROACH:** Climb to 1300 then climbing right turn to 2700 direct DABDE and hold.


AWOS-3 <b>121.125</b>	FORT WAYNE APP CON <b>127.2 284.6</b>	CLNC DEL <b>134.05</b>	UNICOM <b>122.7 (CTAF) ①</b>
--------------------------	--	---------------------------	---------------------------------



ELEV 850	<b>D</b>	TDZE 847
----------	----------	----------

Procedure NA for arrivals at  
TELEY on V38 eastbound.



CATEGORY		A	B	C	D
LPV	DA	1047-3 $\frac{3}{4}$		200 (200-3 $\frac{3}{4}$ )	
INAV/ VNAV	DA	1334-13 $\frac{3}{8}$		487 (500-13 $\frac{3}{8}$ )	
INAV	MDA	1280-1	433 (500-1)	1280-13 $\frac{1}{4}$	433 (500-13 $\frac{1}{4}$ )
 CIRCLING		1340-1	490 (500-1)	1480-13 $\frac{1}{4}$ 630 (700-13 $\frac{1}{4}$ )	1480-2 630 (700-2)

WARSAW MUNI (ASW)  
RNAV (GPS) RWY 27

EC-2, 07 AUG 2025 to 04 SEP 2025