

WAAS  
CH **58039**  
**W11A**

APP CRS  
**106°**

Rwy Idg  
TDZE  
Apt Elev  
**5502**  
**1400**  
**1419**

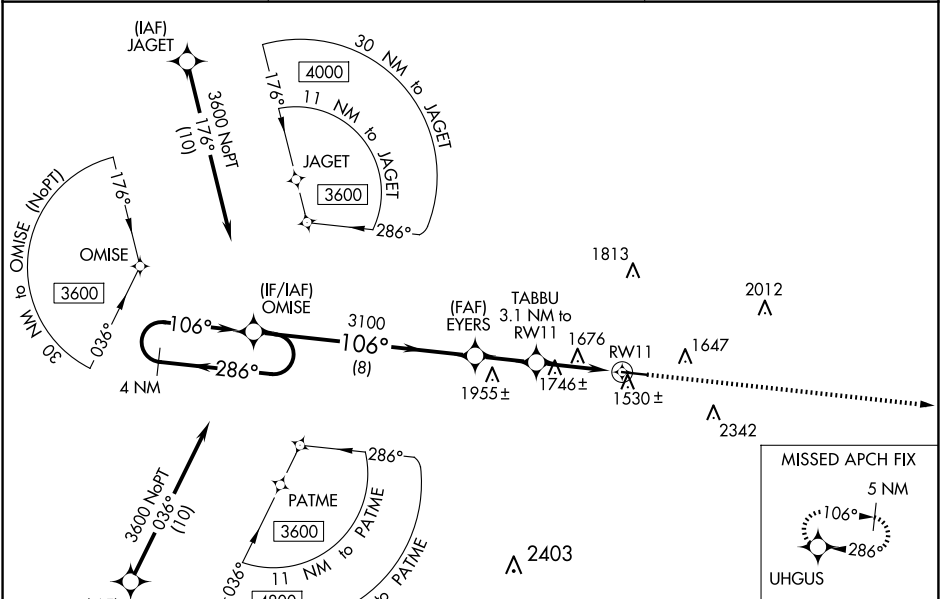
**RNAV (GPS) RWY 11**

INDIANA COUNTY/JIMMY STEWART FLD (IDI)

**⚠** For uncompensated Baro-VNAV systems, LNAV/VNAV NA below -17°C (2°F) or above 54°C (130°F).  
**⚠** Baro-VNAV and VDP NA when using Allegheny County altimeter setting. DME/DME RNP-0.3 NA. Rwy 11 helicopter visibility reduction below ¾ SM NA. When local altimeter setting not received, use Allegheny County altimeter setting and increase LPV DA to 2026 feet and LNAV/VNAV DA to 2156 feet; increase visibility LPV all Cats to 2 ½ SM and LNAV/VNAV all Cats to 3 SM. Increase all MDA 120 feet and all Cat A and B visibility to 1 ¼ SM and LNAV Cat C and D visibility to 2 ½ SM.

MISSED APPROACH:  
Climb to 4800 direct UHGUS and hold.

AWOS-3 <b>126.625</b>	JOHNSTOWN APP CON ★ <b>121.2 299.2</b>	UNICOM <b>122.8 (CTAF) 0</b>
--------------------------	---	---------------------------------



ELEV 1419		TDZE 1400	
4 NM Holding Pattern		UHGUS	
3600		*2380	
GP 3.00° TCH 42		*2 NM to RW11	
CATEGORY		REIL Rwy 11 0	
A		HIRL Rwy 11-29 0	
B			
C			
D			
LPV DA		1907-1¾ 507 (500-1¾)	
LNAV/VNAV DA		2037-2½ 637 (700-2½)	
LNAV MDA		2060-1 660 (700-1)	
CIRCLING		2120-1 701 (800-1)	
		2180-1 761 (800-1)	
		2660-3 1241 (1300-3)	