

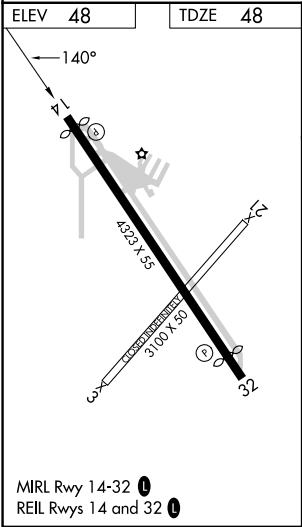
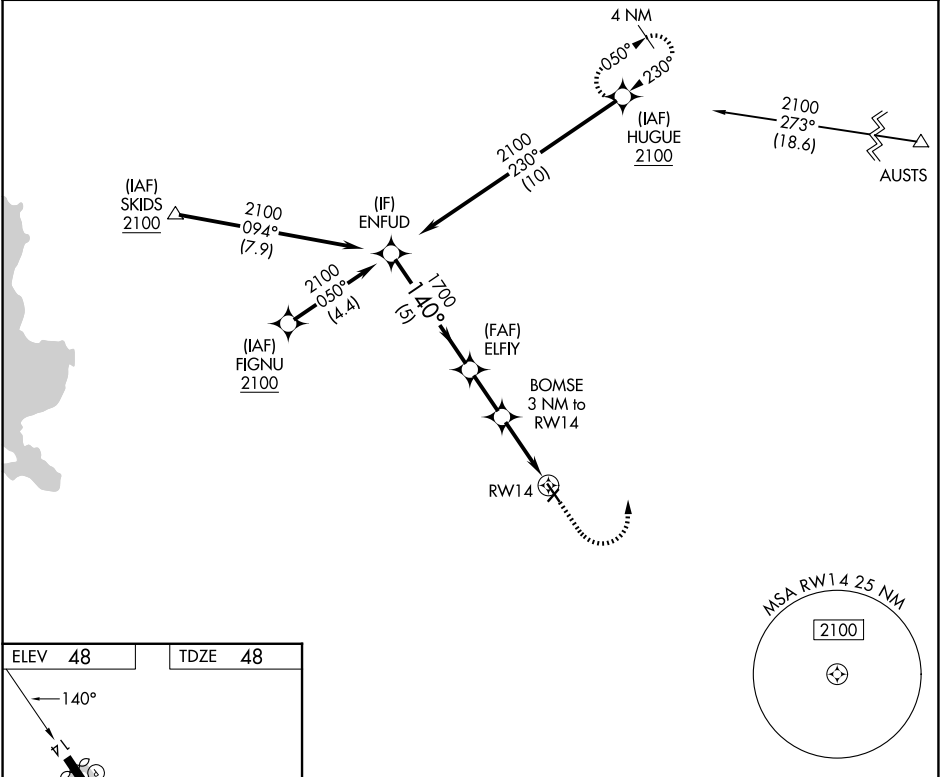
APP CRS	Rwy Ldg	4073
140°	TDZE	48
	Apt Elev	48

RNAV (GPS) RWY 14

SINTON (T69)

RNP APCH - GPS.	MISSED APPROACH: Climb to 500 then climbing left turn to 2100 direct HUGUE and hold.
<div><div>▼</div><div>⚠</div></div> Rwy 14 helicopter visibility reduction below 1 SM NA. Procedure NA at night.	

AWOS-3 118.25	CORPUS APP CON 120.9 348.725	UNICOM 122.8 (CTAF) 0
------------------	---------------------------------	--------------------------



VGSi and descent angles not coincident (VGSi Angle 3.00/TCH 19).				500	2100	HUGUE
ENFUD				↑	↪	✧
2100				1700	1040	
5 NM				2.1 NM	3 NM	
CATEGORY	A	B	C	D		
LNAV MDA	420-1	372 (400-1)	NA			
CIRCLING	620-1	720-1	NA			
	572 (600-1)	672 (700-1)				