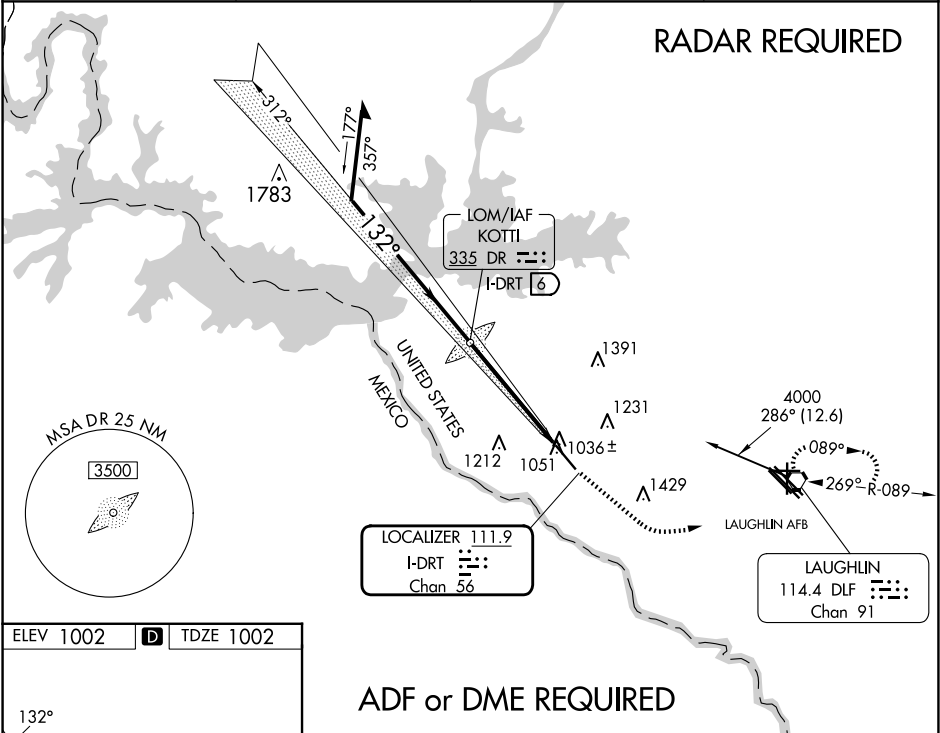


LOC I-DRT 111.9 Chan 56	APP CRS 132°	Rwy Idg TDZE Apt Elev 6000 1002 1002
---	------------------------	--

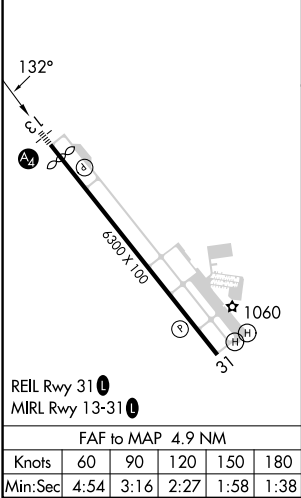
ILS or LOC RWY 13
DEL RIO INTL (DRT)

NA Circling NA for Cat D SW of Rwy 13-31. When local altimeter setting not received, use Laughlin AFB altimeter setting and increase all DAs 30 feet, all MDAs 40 feet, increase S-LOC 13 Cat D and Circling Cats C and D visibility ¼ SM. VDP NA when using Laughlin AFB altimeter setting.	MALS 	MISSED APPROACH: Climb to 2000 via heading 122° then climbing left turn to 4000 direct DLF VORTAC and hold. Continue climb-in-hold to 4000.
--	----------	---

ASOS 118.525	DEL RIO APP CON ★ 119.6 259.1	CLNC DEL 120.5	UNICOM 122.8 (CTAF)
------------------------	---	--------------------------	-------------------------------



ELEV 1002	D	TDZE 1002
-----------	----------	-----------



Remain within 10 NM			
DR KOTTI LOM I-DRT 6			
2000 4000 DLF hdg 122°			
3200 2700 2673			
GS 3.00° TCH 48			
3.7 NM 1.2			
CATEGORY	A	B	C
S-ILS 13	1202-¾ 200 (200-¾)		
S-LOC 13	1420-½	418 (500-½)	1420-¾ 418 (500-¾)
CIRCLING	1440-1 438 (500-1)	1560-1 558 (600-1)	1740-2 738 (800-2)