

VOR/DME JBR	APP CRS	Rwy Idg	6200
115.85	227°	TDZE	262
Chan 105(Y)		Apt Elev	262

VOR RWY 23

JONESBORO MUNI (JBR)

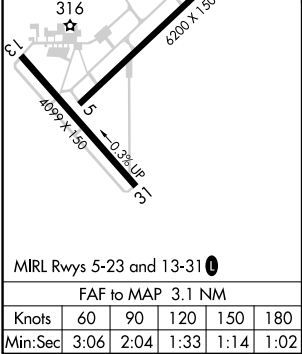
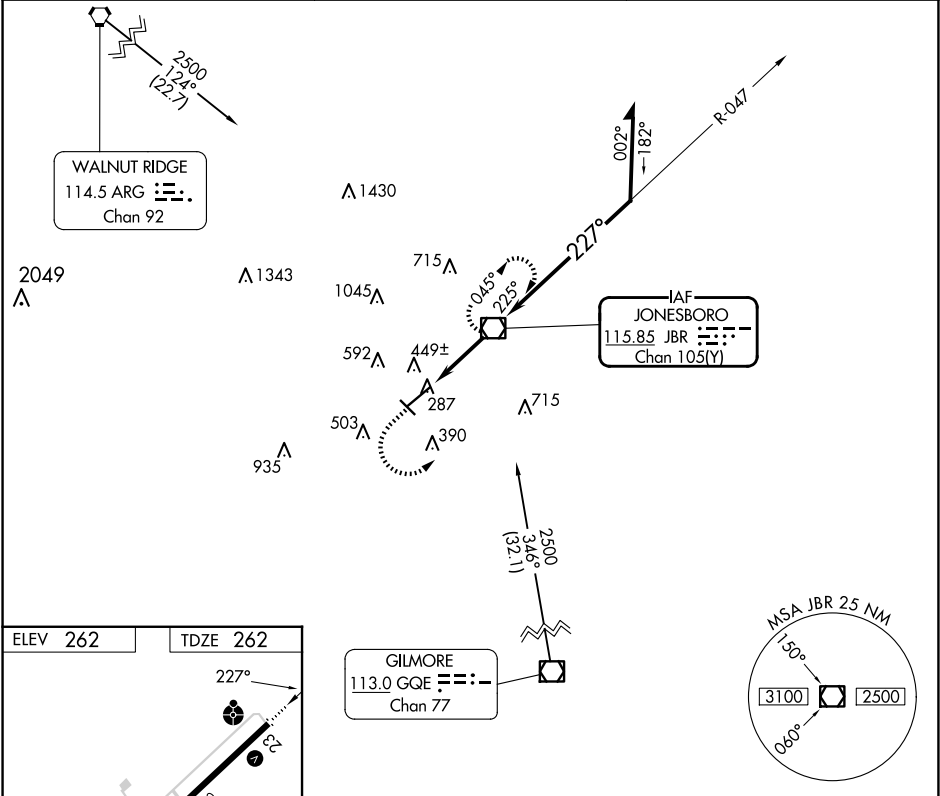
⚠ Circling Rwy 31 NA at night. Circling NA northwest of Rwy 5-23.

⚠ Rwy 23 helicopter visibility reduction below ¾ SM NA. When local altimeter not received, use Walnut Ridge altimeter setting and increase all MDAs 60 feet and S-23 Cat C/D visibility ½ SM and Circling Cat C ¼ SM.

ODALS

MISSED APPROACH: Climb to 2000 then climbing left turn to 2300 direct JBR VOR/DME and hold.

ASOS 118.525	MEMPHIS CENTER 120.075 289.4	UNICOM 123.0 (CTAF) 0
-----------------	---------------------------------	--------------------------



2000	2300	JBR	JBR VOR/DME 2500	Remain within 10 NM
↑	↶	☐		
		JBR 1.9	JBR 3.1	≤ 3.00° TCH 54
		1.2	1.9 NM	
CATEGORY	A	B	C	D
S-23	700-¾ 438 (500-¾)		700-1½ 438 (500-1½)	
CIRCLING	740-1 478 (500-1)		820-1½ 558 (600-1½)	1080-2¾ 818 (900-2¾)

SC-1, 07 AUG 2025 to 04 SEP 2025

SC-1, 07 AUG 2025 to 04 SEP 2025