

WAAS CH <b>65806</b> <b>W23A</b>	APP CRS <b>230°</b>	Rwy Idg <b>6200</b> TDZE <b>262</b> Apt Elev <b>262</b>
--	------------------------	---

RNAV (GPS) RWY 23  
JONESBORO MUNI (JBR)

RNP APCH.

**V** Circling NA northwest of Rwy 5-23. Circling Rwy 31 NA at night. Baro-VNAV and VDP NA when using Walnut Ridge altimeter setting. Rwy 23 helicopter visibility reduction below  $\frac{3}{4}$  SM NA. For uncompensated Baro-VNAV systems, LNAV/VNAV NA below -1°C or above 54°C. For inop ALS, increase LPV Cat A/B visibility to  $\frac{1}{2}$  SM. Inop table does not apply to LNAV/VNAV. For inop ALS when using Walnut Ridge altimeter setting, increase LPV Cat A/B visibility to 1 SM. When using Walnut Ridge altimeter setting, inop table does not apply to LNAV/VNAV. When local altimeter setting not received, use Walnut Ridge altimeter setting: increase LPV DA to 600 feet, LNAV/VNAV DA to 630 feet and all visibilities  $\frac{1}{2}$  SM; increase all MDAs 60 feet and LNAV Cat C/D and Circling Cat C visibility  $\frac{1}{4}$  SM.

ODALS



ASOS <b>118,525</b>	MEMPHIS CENTER <b>120,075 289.4</b>	UNICOM <b>123.0 (CTAF) L</b>
------------------------	--	---------------------------------

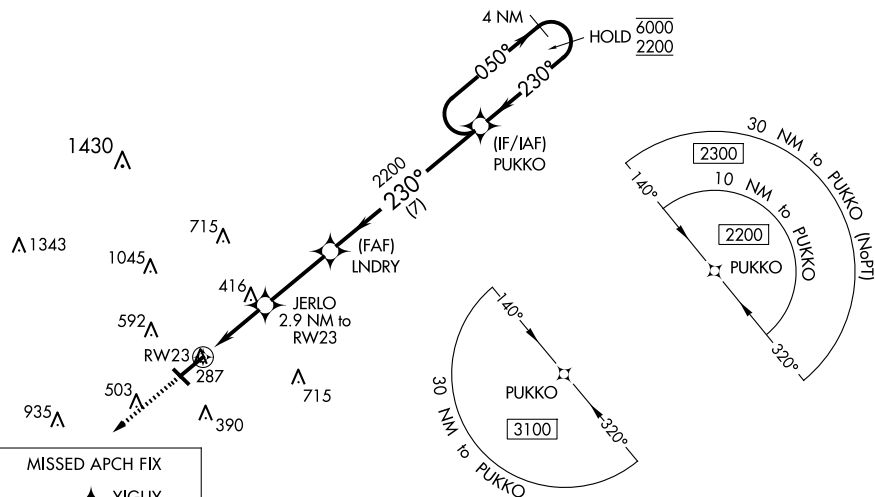


Figure 1-1: Example of a 4 NM Holding Pattern. The diagram illustrates a holding pattern for RW23. The pattern is defined by a 4 NM radius. The holding pattern is defined by a 4 NM radius. The diagram includes a scale bar showing distances of 1.2 NM, 1.7 NM, 3 NM, and 7 NM. The holding pattern is defined by a 4 NM radius. The diagram includes a scale bar showing distances of 1.2 NM, 1.7 NM, 3 NM, and 7 NM. The holding pattern is defined by a 4 NM radius. The diagram includes a scale bar showing distances of 1.2 NM, 1.7 NM, 3 NM, and 7 NM.

