

LOC I-JBR	APP CRS	Rwy Idg	6200
110.15	230°	TDZE	262
		Apt Elev	262

ILS or LOC RWY 23

JONESBORO MUNI (JBR)

⚠

⚠

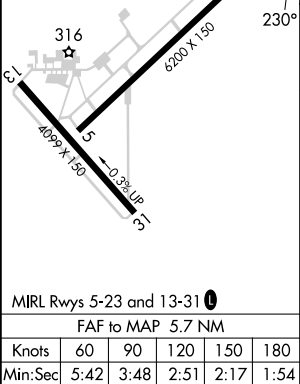
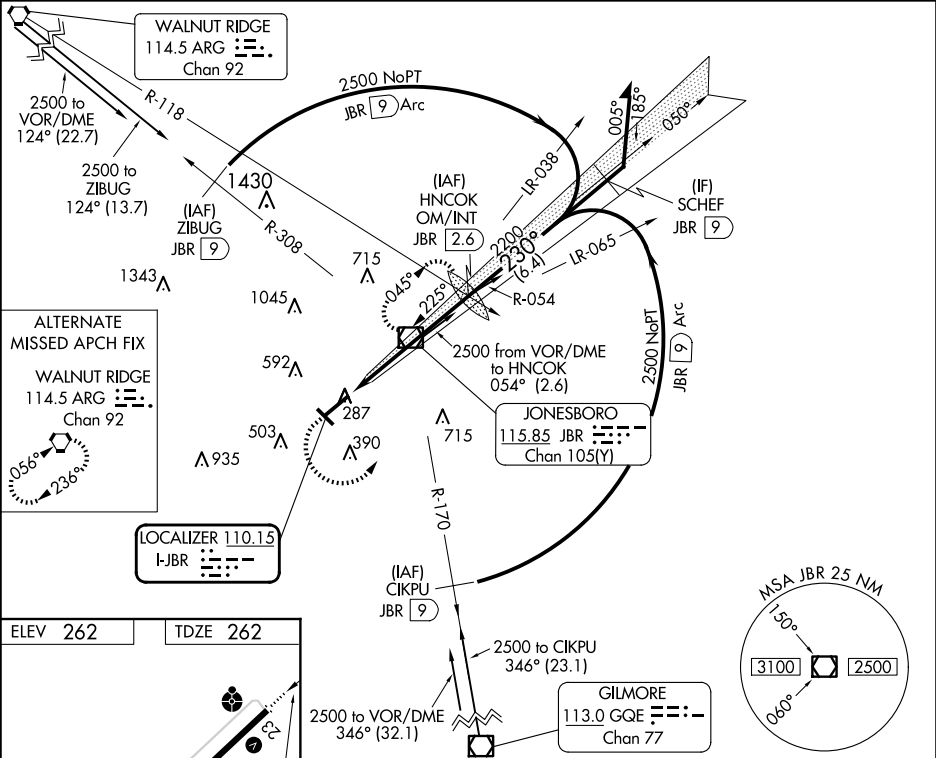
Circling NA northwest of Rwy 5-23. Rwy 23 helicopter visibility reduction below ¾ SM NA. When local altimeter not received, use Walnut Ridge altimeter setting; increase DA to 600 feet and all visibilities ½ SM; increase all MDAs 60 feet, S-LOC 23 Cat C/D visibility ½ SM and Circling Cat C ¼ SM. For inop ALS, increase S-ILS 23 Cat A/B visibility to ¾ SM and S-LOC 23 Cat C/D to 1 ¾ SM. For inop ALS when using Walnut Ridge altimeter setting, increase S-ILS 23 Cat A/B visibility to 1 SM. When using Walnut Ridge altimeter setting, inop table does not apply to S-LOC 23 Cats C/D. Circling Rwy 31 NA at night.

ODALS

MISSED APPROACH:

Climb to 2000 then climbing left turn to 2300 direct JBR VOR/DME and hold.

ASOS	MEMPHIS CENTER	UNICOM
118.525	120.075 289.4	123.0 (CTAF) 0



CATEGORY	A		B		C		D	
	S-ILS 23		546-¾ 284 (300-¾)					
	S-LOC 23		720-¾ 458 (500-¾)		720-1¼ 458 (500-1¼)			
	CIRCLING		740-1 478 (500-1)		820-1½ 558 (600-1½)		1080-2¾ 818 (900-2¾)	

2000 2300 JBR

HNCOK OM/INT JBR 2.6

Remain within 10 NM

JBR VOR/DME 2143

050° 230° 2200

2200

GS 3.00° TCH 53

5.7 NM