

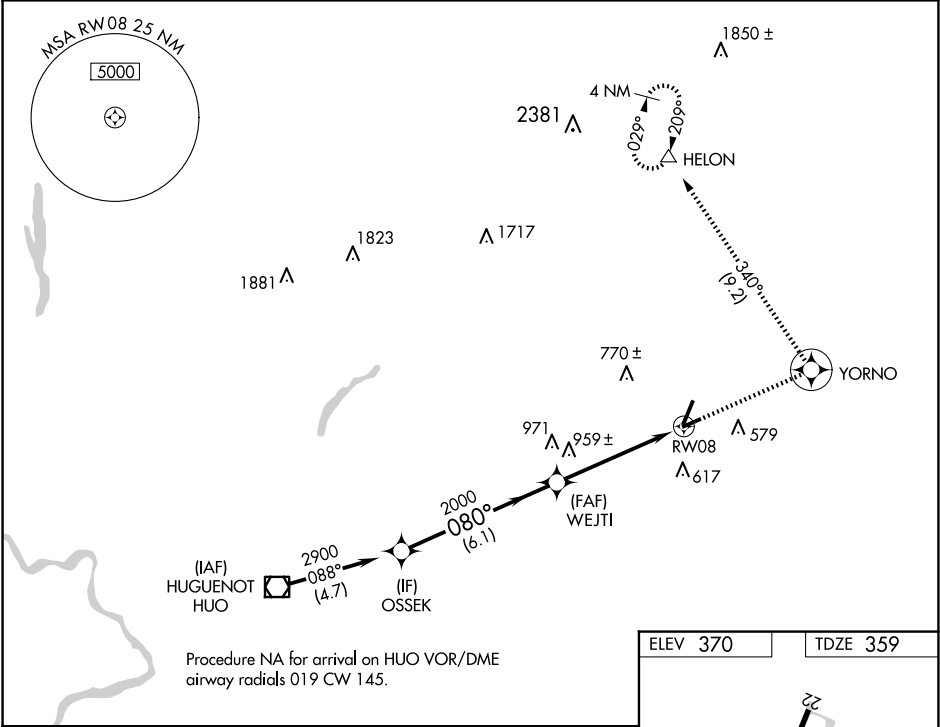
APP CRS	Rwy Idg	3664
080°	TDZE	359
	Apt Elev	370

RNAV (GPS) RWY 8

ORANGE COUNTY (MGJ)

RNP APCH - GPS.	MISSED APPROACH: Climb to 5300 direct YORNO and left turn on track 340° to HELON and hold.
<div><div>T</div><div>Rwy 8 helicopter visibility reduction below 1 SM NA. Straight-in Rwy 8 NA at night, Circling Rwy 8, 22, 26 NA at night.</div></div>	

ASOS 119.275	NEW YORK APP CON 132.75 363.1	CLNC DEL 123.85	AUNICOM 122.725 (CTAF) 0
-----------------	----------------------------------	--------------------	-----------------------------



VGSI and RNAV glidepath not coincident (VGSI Angle 3.50/TCH 49).		5300	YORNO	HELON
		<div>↑</div>	<div>⊙</div>	<div>△</div>
			tr 340°	
		OSSEK	WEJTI	RW08
		2900	2000	3.00° TCH 40
		080°		
		6.1 NM	5 NM	
CATEGORY	A	B	C	D
LNNAV MDA	1220-1	861 (900-1)	1220-2½	861 (900-2½)
CIRCLING	1220-1¼	850 (900-1¼)	1220-2½ 850 (900-2½)	1220-2¾ 850 (900-2¾)

ELEV 370

TDZE 359

22

08

080°

0.3% UP

5000 X 100

0.3% UP

3664 X 100

REIL Rwy 4 and 22

HIRL Rwy 4-22

MIRL Rwy 8-26