

APP CRS
216°

Rwy Ldg
TDZE
370

Apt Elev
370

RNAV (GPS) RWY 22

ORANGE COUNTY (MGJ)

RNP APCH - GPS.

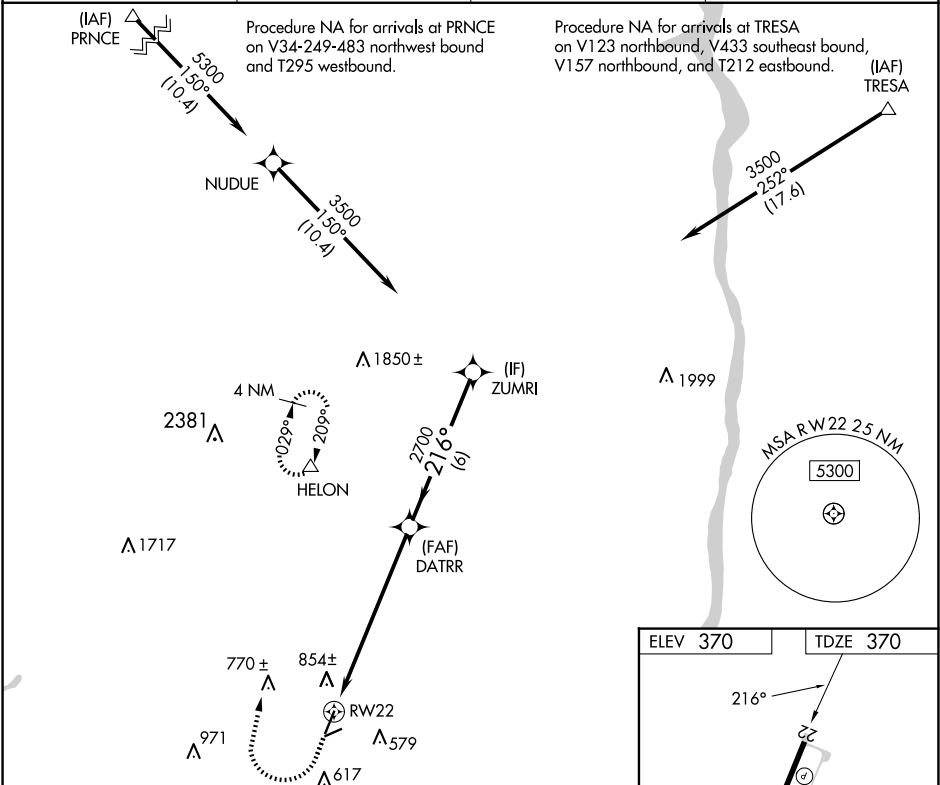
▼

▲

Rwy 22 helicopter visibility reduction below ¾ SM NA.
Circling Rwy 8, 26 NA at night.

MISSED APPROACH: Climb to 1500 then climbing
right turn to 5300 direct HELON and hold,
continue climb-in-hold to 5300.

ASOS 119.275	NEW YORK APP CON 132.75 363.1	CLNC DEL 123.85	AUNICOM 122.725 (CTAF) 0
-----------------	----------------------------------	--------------------	-----------------------------



VGSI and descent angles not coincident
(VGSI Angle 3.00/TCH 45).

1500

5300

HELON

ZUMRI

DATRR

RW22

3500

216°

2700

2.3 NM to RW22

3.00° TCH 52

6 NM

4.8 NM

2.3

CATEGORY	A	B	C	D
LNVA MDA	1160-1 790 (800-1)	1160-1¼ 790 (800-1¼)	1160-2½ 790 (800-2½)	790 (800-2½)
CIRCLING	1180-1 810 (900-1)	1180-1¼ 810 (900-1¼)	1180-2½ 810 (900-2½)	1240-2¾ 870 (900-2¾)

REIL Rwy 4 and 22

HIRL Rwy 4-22 0

MIRL Rwy 8-26 0