

WAAS CH <b>99336</b> <b>W05A</b>	APP CRS <b>029°</b>	Rwy Ldg TDZE Apt Elev	<b>5047</b> <b>746</b> <b>775</b>
--	------------------------	-----------------------------	---

RNAV (GPS) RWY 5  
GREATER CUMBERLAND RGNL (CBE)

RNP APCH.

▼

▲

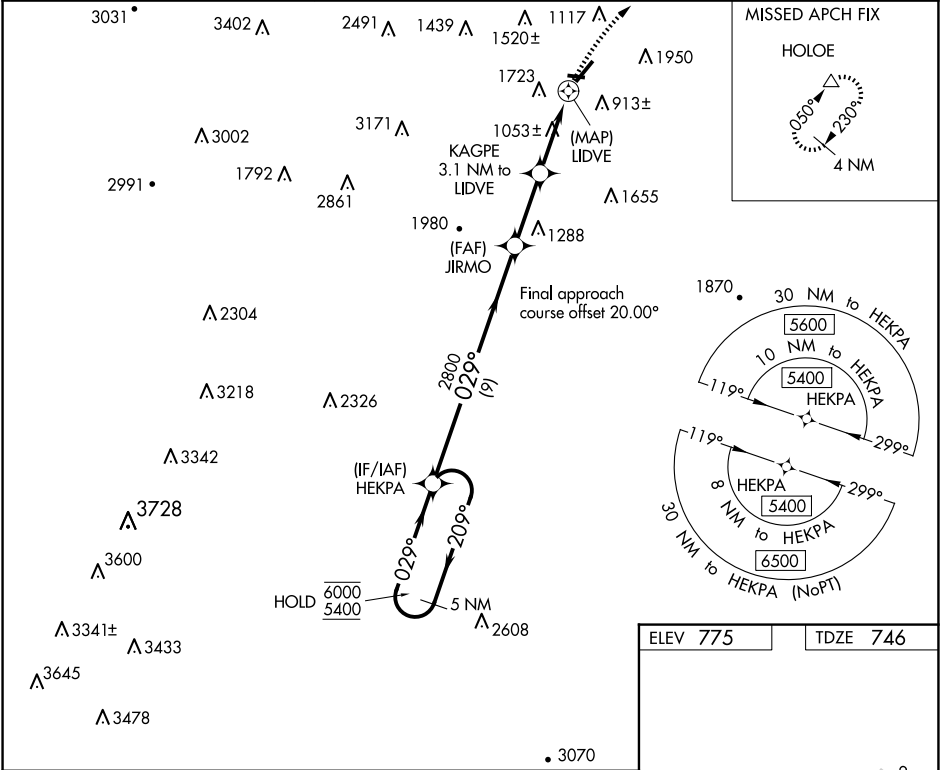
❄

Circling NA northwest of Rwy 5-23. Rwy 5 helicopter visibility reduction below 1 SM NA. Straight-in Rwy 5 NA at night, Circling Rwy 5, 29 NA at night.

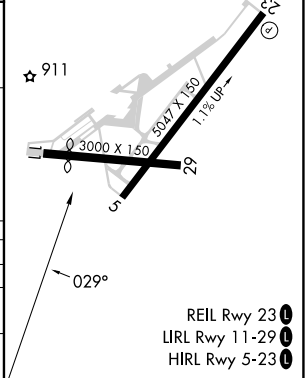
-14°C

MISSED APPROACH: Climbing right turn to 4500 direct HOLOE and hold, continue climb-in-hold to 4500.

AWOS-3 <b>128.625</b>	JOHNSTOWN APP CON ★ <b>121.2 299.2</b>	UNICOM <b>122.8 (CTAF) 0</b>
--------------------------	---	---------------------------------



5 NM Holding Pattern		HEKPA	Visual Segment - Obstacles.		4500	HOLOE
6000 ← 209°		5400 → 029°	029°	JIRMO	KAGPE 3.1 NM to LIDVE	LIDVE
		2800	1920			
		9 NM	2.8 NM	3.1 NM	0.5 NM	
CATEGORY	A	B	C	D		
LP MDA	1420-1	674 (700-1)	1420-1 <sup>7</sup> / <sub>8</sub>	674 (700-1 <sup>7</sup> / <sub>8</sub> )		
LNAV MDA	1820-1 <sup>1</sup> / <sub>4</sub> 1074 (1100-1 <sup>1</sup> / <sub>4</sub> )	1820-1 <sup>1</sup> / <sub>2</sub> 1074 (1100-1 <sup>1</sup> / <sub>2</sub> )	1820-3	1074 (1100-3)		
CIRCLING	1820-1 <sup>1</sup> / <sub>4</sub> 1045 (1100-1 <sup>1</sup> / <sub>4</sub> )	2140-1 <sup>1</sup> / <sub>2</sub> 1365 (1400-1 <sup>1</sup> / <sub>2</sub> )	2260-3 1485 (1500-3)	2340-3 1565 (1600-3)		



NE-3, 07 AUG 2025 to 04 SEP 2025

NE-3, 07 AUG 2025 to 04 SEP 2025