

WAAS CH <b>65705</b> <b>W03A</b>	APP CRS <b>027°</b>	Rwy Idg <b>5008</b> TDZE <b>996</b> Apt Elev <b>996</b>
--	------------------------	---

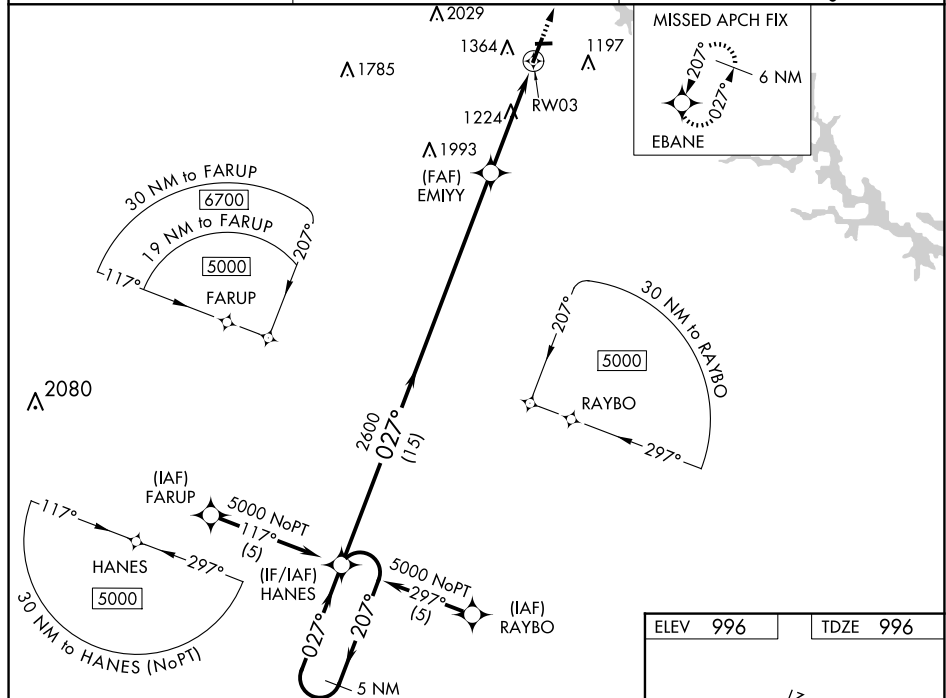
# RNAV (GPS) RWY 3

## TOCCOA RG LETOURNEAU FLD (TOC)

**V**  
**Δ** NA Baro-VNAV and VDP NA when using Gainesville altimeter setting. For uncompensated Baro-VNAV systems, LNAV/VNAV NA below -8°C (18°F) or above 54°C (130°F). DME/DME RNP-0.3 NA. When local altimeter setting not received, use Gainesville altimeter setting and increase LPV DA to 1507 feet, LNAV/VNAV DA to 1859 and all MDA 120 feet. Increase LPV all Cds visibility  $\frac{3}{8}$  mile, increase LNAV Cat B visibility  $\frac{1}{4}$  mile, Cds C/D  $\frac{1}{2}$  mile and Circling Cds A/B/C visibility  $\frac{1}{4}$  mile. Helicopter visibility reduction below  $\frac{3}{4}$  SM NA.

**MISSED APPROACH:**  
Climb to 6600 direct  
EBANE and hold,  
continue climb-in-hold  
to 6600.

AWOS-3 <b>119.625</b>	ATLANTA CENTER <b>134.8 379.95</b>	UNICOM <b>122.8 (CTAF) L</b>
--------------------------	---------------------------------------	---------------------------------



5 NM Holding Pattern

GP 3.44°  
TCH 40

207°  
027°

5000

2600

2600

1.9 NM to RW03

VGS1 and RNAV glidepath not coincident (VGS1 Angle 3.25/TCH 32).

HANES


EMIYY

6600

EBANE

\*LNAV only

RW03

CATEGORY		A		B		C		D	
LPV	DA	1392-1½ 396 (400-1½)				NA			
LNAV/ VNAV	DA	1744-2½ 748 (800-2½)				NA			
LNAV	MDA	1680-1 684 (700-1)				1680-2 684 (700-2)			
 CIRCLING		1720-1 724 (800-1)				1760-2¼ 764 (800-2¼)		2480-3 1484 (1500-3)	

