

WAAS CH <b>61005</b> <b>W21A</b>	APP CRS <b>207°</b>	Rwy ldg TDZE <b>980</b> Apt Elev <b>996</b>
--	------------------------	---

RNAV (GPS) RWY 21

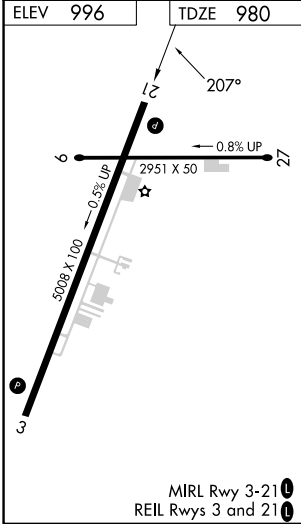
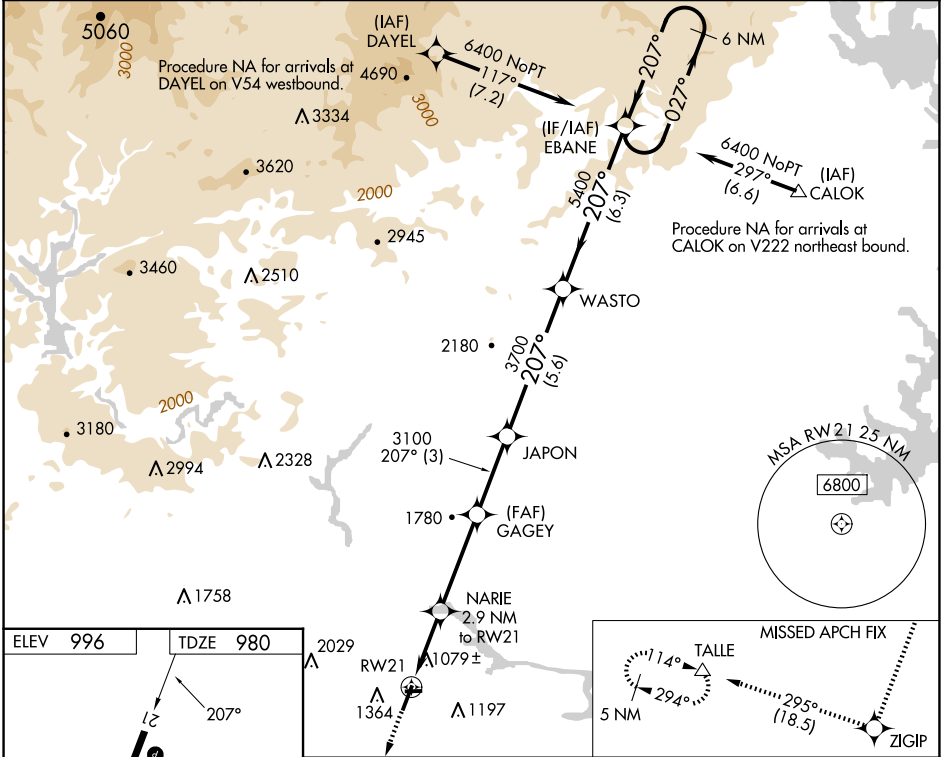
TOCCOA RG LETOURNEAU FLD (TOC)

RNP APCH

Baro-VNAV and VDP NA when using Gainesville altimeter setting. For uncompensated Baro-VNAV systems, LNAV/VNAV NA below -8°C or above 54°C. When local altimeter setting not received, use Gainesville altimeter setting: Increase LPV DA to 1345 feet, LNAV/VNAV DA to 1510 feet, and increase all MDAs 120 feet, increase LNAV/LNAV visibility all Cats ½ SM, LNAV visibility Cats C/D ¾ SM and Circling visibility Cats A/B ¼ SM and Cat C ½ SM. Circling Rwy 9, 27 NA at night.

MISSED APPROACH: Climb to 5800 direct ZIGIP and on track 295° to TALLE and hold, continue climb-in-hold to 5800.

AWOS-3 <b>119.625</b>	ATLANTA CENTER <b>134.8 379.95</b>	UNICOM <b>122.8 (CTAF) 0</b>
--------------------------	---------------------------------------	---------------------------------



5800	ZIGIP	TALLE	* LNAV only		EBANE	6 NM Holding Pattern
↑		tr 295°				
* 1.8 NM to RW21		NARIE 2.9 NM to RW21	GAGEY 3100	JAPON 3700	WASTO 5400	6400
RW21		* 1920	3100			GP 3.00° TCH 33
1.8 1.1 NM		3.7 NM	3 NM	5.6 NM	6.3 NM	
CATEGORY		A	B	C	D	
LPV DA		1230-1		250 (300-1)		
LNAV/VNAV DA		1395-1½		415 (400-1½)		
LNAV MDA		1560-1	580 (600-1)	1560-1½	580 (600-1½)	
CIRCLING		1720-1	724 (800-1)	1760-2¼ 764 (800-2¼)	2480-3 1484 (1500-3)	