

WAAS CH 99606 W25A	APP CRS 249°	Rwy Idg TDZE Apt Elev	5350 958 958
--	------------------------	-----------------------------	---

RNAV (GPS) RWY 25

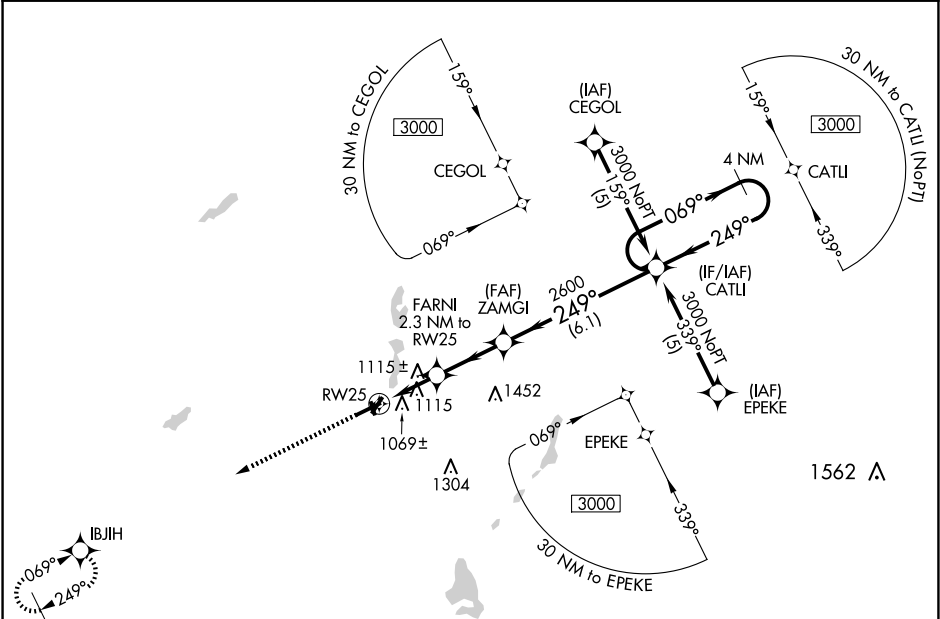
BRANCH COUNTY MEML (OEB)

RNP APCH

Rwy 25 helicopter visibility reduction below 1 SM NA. When local altimeter setting not received, use Sturgis altimeter setting and increase all DAs 48 feet and LPV visibility ¼ mile all Cats and all MDAs 60 feet and LNAV Cat C visibility ¼ mile. Baro-VNAV NA when using Sturgis altimeter setting. For uncompensated Baro-VNAV systems, LNAV/VNAV NA below -16°C or above 54°C. Circling NA to Rwy 16 and 34.

MISSED APPROACH:
Climb to 3000 direct
IBJIH and hold.

AWOS-3 118.125	GREAT LAKES APP CON ★ 121.2 239.25	UNICOM 122.7 (CTAF) 0
--------------------------	--	---------------------------------



4 NM

3000

IBJIH

* LNAV only

FARNI
2.3 NM to
RW25

ZAMGI

CATI

4 NM
Holding Pattern

GP 3.00°
TCH 40

2600

249°

069°

249°

3000

RW25

2.3

2.7 NM

6.1 NM

CATEGORY

A

B

C

D

LPV DA

1305-1¼

347 (400-1¼)

NA

LNAV/
VNAV DA

1423-1¾

465 (500-1¾)

NA

LNAV MDA

1420-1

462 (500-1)

1420-1¼
462 (500-1¼)

NA

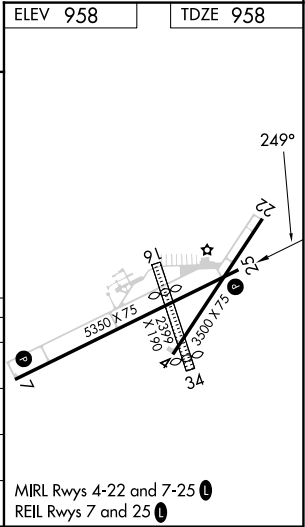
CIRCLING

1420-1
462 (500-1)

1440-1
482 (500-1)

1560-1¾
602 (700-1¾)

NA



EC-1, 07 AUG 2025 to 04 SEP 2025

EC-1, 07 AUG 2025 to 04 SEP 2025