

GRAND RAPIDS, MINNESOTA

AL-5258 (FAA)

25219

WAAS CH <b>86412</b> <b>W34A</b>	APP CRS <b>344°</b>	Rwy Ldg <b>5756</b> TDZE <b>1356</b> Apt Elev <b>1356</b>
--	------------------------	---

RNAV (GPS) RWY 34  
GRAND RAPIDS/ITASCA COUNTY-GORDON NEWSTROM FLD (GPZ)

RNP APCH.

**T** Circling to Rwy 5, 23 NA at night. Circling NA for Cat D east of Rwy 16-34.  
**A** For uncompensated Baro-VNAV systems, LNAV/VNAV NA below -17°C or above 54°C.

MAISR



MISSED APPROACH: Climb to 3000  
direct EMIDY and hold.

AWOS-3PT

118.425

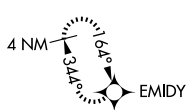
MINNEAPOLIS CENTER

127.9 281.45

UN|COM

122.8 (CTAF) **L**

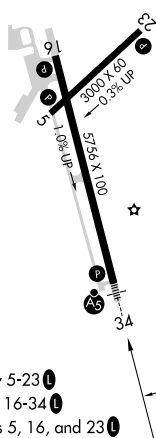
MISSED APCH FIX



Procedure NA for arrivals at  
GPZ VOR/DME on V430  
westbound.

ELEV 1356

TDZE 1356



MIRL Rwy 5-23 **L**  
HIRL Rwy 16-34 **L**

GRAND RAPIDS, MINNESOTA

Amdt 1 22APR21

GRAND RAPIDS/ITASCA COUNTY-GORDON NEWSTROM FLD (GPZ)

47°13'N-93°31'W

RNAV (GPS) RWY 34

NC-1, 07 AUG 2025 to 04 SEP 2025

NC-1, 07 AUG 2025 to 04 SEP 2025