

WAAS CH 60933 W10A	APP CRS 097°	Rwy Idg 5501 TDZE 621 Apt Elev 621
--	------------------------	---

RNAV (GPS) RWY 10

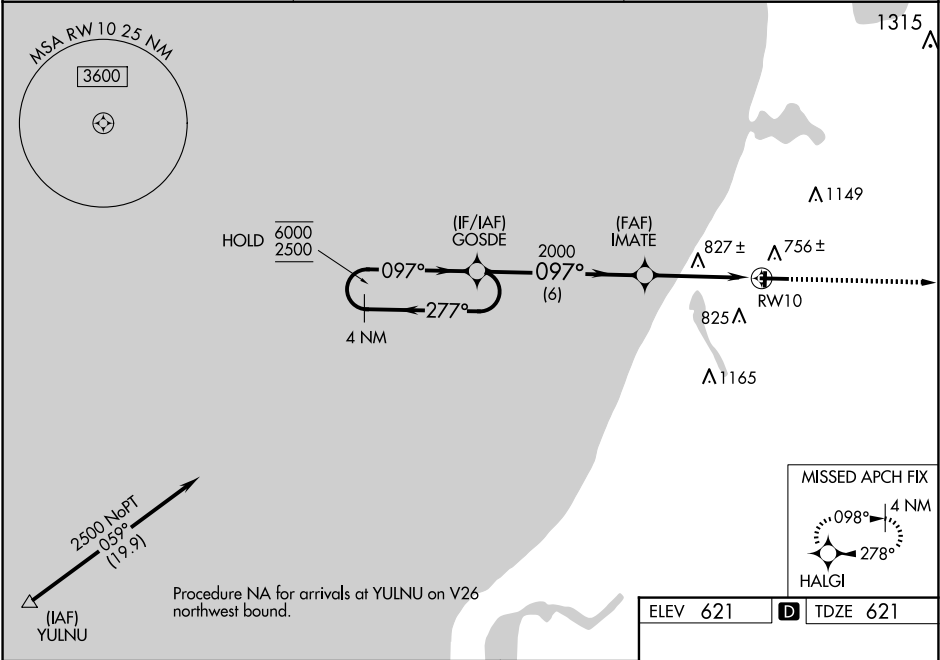
MANISTEE COUNTY/BLACKER (MBL)

RNP APCH - GPS.

Circling Rwy 1, 19 NA at night. Rwy 10 helicopter visibility reduction below $\frac{3}{4}$ SM NA.
For uncompensated Baro-VNAV systems, LNAV/VNAV NA below -16°C or above 54°C.

MISSED APPROACH:
Climb to 3000 direct
HALGI and hold.

AWOS-3PT 118.825	MINNEAPOLIS CENTER 120.85 322.35	UNICOM 122.8 (CTAF) 1
----------------------------	--	---------------------------------



4 NM Holding Pattern

VGSI and RNAV glidepath not coincident (VGSI Angle 3.00/TCH 30).

3000 HALGI

6000 2500

GP 3.00° TCH 53

GOSDE

IMATE

2000

1.4 NM to RW10

RW10

6 NM

2.8 NM

1.4 NM

CATEGORY	A	B	C	D
LPV DA	890- $\frac{7}{8}$		269 (300- $\frac{7}{8}$)	
LNAV/VNAV DA	1091-1 $\frac{3}{8}$		470 (500-1 $\frac{3}{8}$)	
LNAV MDA	1080-1	459 (500-1)	1080-1 $\frac{3}{8}$	459 (500-1 $\frac{3}{8}$)
CIRCLING	1160-1 539 (600-1)	1220-1 599 (600-1)	1400-2 $\frac{1}{4}$ 779 (800-2 $\frac{1}{4}$)	1500-2 $\frac{3}{4}$ 879 (900-2 $\frac{3}{4}$)

HIRL Rwy 10-28 1

MIRL Rwy 1-19 1

REIL Rwy 10 1